

# WebEx Success Tips and Tricks

- Please keep your cameras off
- You will be automatically muted when you join the meeting
- Do not put the WebEx on hold
- Make sure you do not have 2 audio functions on  
(example: the phone and computer audio) this will cause an echo
- For best performance, close the internet except for the WebEx and close larger programs
- You will be muted by the host during the WebEx to minimize background disturbances and eliminate more than one person talking at a time
- For any questions please use the chat function - the questions will go to the entire group
- Questions will be answered as they are received



# Highland Bridge PARKS ADVISORY COMMITTEE

## MEETING FOUR

11.10.2020

**RYAN** CONFLUENCE



IN ASSOCIATION WITH THE

City of St. Paul

Department of Parks & Recreation





# AGENDA

Introduction

Overview of Parks to Date

Parks A and C at 100%

- Park A Layout and Skate Park Design Development
- Park C Layout and modifications

MRB Crossing Update

Park Naming Process

Design Update Parks B and D 90%

- Selection of Park amenities, tower and play structure, courts.

Park Amenities update for park system

Park Costing Overview

Next Steps

- construction update





# Project Team Contacts



**Nick Koch**

Ryan Companies  
Phone: 612-492-4678  
[Nick.Koch@RyanComapnies.com](mailto:Nick.Koch@RyanComapnies.com)



**Mac Alberts**

Ryan Companies  
Phone: 612-492-4313  
[Mac.Alberts@RyanCompanies.com](mailto:Mac.Alberts@RyanCompanies.com)



**Tony Barranco**

Ryan Companies  
Phone: 612-492-4339  
[Tony.Barranco@RyanCompanies.com](mailto:Tony.Barranco@RyanCompanies.com)



**Maureen Michalski**

Ryan Companies  
Phone: 612-492-4603  
[Maureen.Michalski@RyanCompanies.com](mailto:Maureen.Michalski@RyanCompanies.com)



**Ellen Stewart**

Parks and Recreation  
Phone: 651-266-6380  
[Ellen.Stewart@ci.stpaul.mn.us](mailto:Ellen.Stewart@ci.stpaul.mn.us)



**Terry Minarik**

Confluence  
Phone: 612-333-3702 x501  
[TMinarik@ThinkConfluence.com](mailto:TMinarik@ThinkConfluence.com)



**Brad Aldrich**

Confluence  
Phone: 612-333-3702 x503  
[BAldrich@ThinkConfluence.com](mailto:BAldrich@ThinkConfluence.com)



# Project Background

## Ford Site Project Studies

Since 2006, when Ford Motor Company announced its intent to close the plant, the City of Saint Paul has been working actively to plan for the site's future.

## Professional Studies

- A total of 14 professional studies conducted by the City and additional studies by Ford Motor Company have examined a wide range of topics, such as the potential of industrial reuse, a geotechnical analysis of the tunnels under the site, open space priorities, sustainable design, stormwater management, and traffic impacts.
- The studies were essential to understand opportunities for and limitations on the redevelopment of the site – economically, environmentally, socially, and within the context of the community. The studies identified infrastructure efficiencies, cost-effectiveness, opportunities for environment design and conservation, and how to strike a balance between development and the creation of vibrant public spaces
- The Ford Site Zoning and Public Realm Master Plan, adopted by the Saint Paul City Council in 2017, is the culmination of a decade of planning for the site. It provides a framework to guide mixed-use redevelopment of the 122-acre main assembly plant parcel and the adjacent 13-acre rail yard. It does not include the 22-acre river parcel ("Area C").

## Community Engagement and Adoption

- Since 2007, the City has been seeking the community and other stakeholders' visions and priorities for the Ford site. The thousands of ideas and suggestions that we have received over the past 10 years, and through more than 140 public meetings of all sizes, have shaped the redevelopment framework for the site.

<https://www.stpaul.gov/departments/planning-economic-development/planning/ford-site-21st-century-community>



# Role of Parks Advisory Committee (PAC)

The Parks Advisory Committee provides volunteer opportunities for stakeholders to share insight and resources and serve to build and sustain relationships between the community and the City of St. Paul. Members of the PAC are expected to represent the views of park users and to work collaboratively with each other and the project team to provide insight, feedback and information to the community about the project.

## Responsibilities of PAC members include:

- Become knowledgeable about the Project and its goals,
- Understand and represent the park and recreation needs of the community and park users,
- Act as community liaisons for the project,
- Provide feedback on the park plans,
- Help identify priorities and needs within the Park System and within their communities,
- Provide insight on the direction of Park development,
- Report back to the community, on the design process, information presented, and the development of the parks,
- PAC members are expected to attend and participate in PAC meetings throughout the design process.



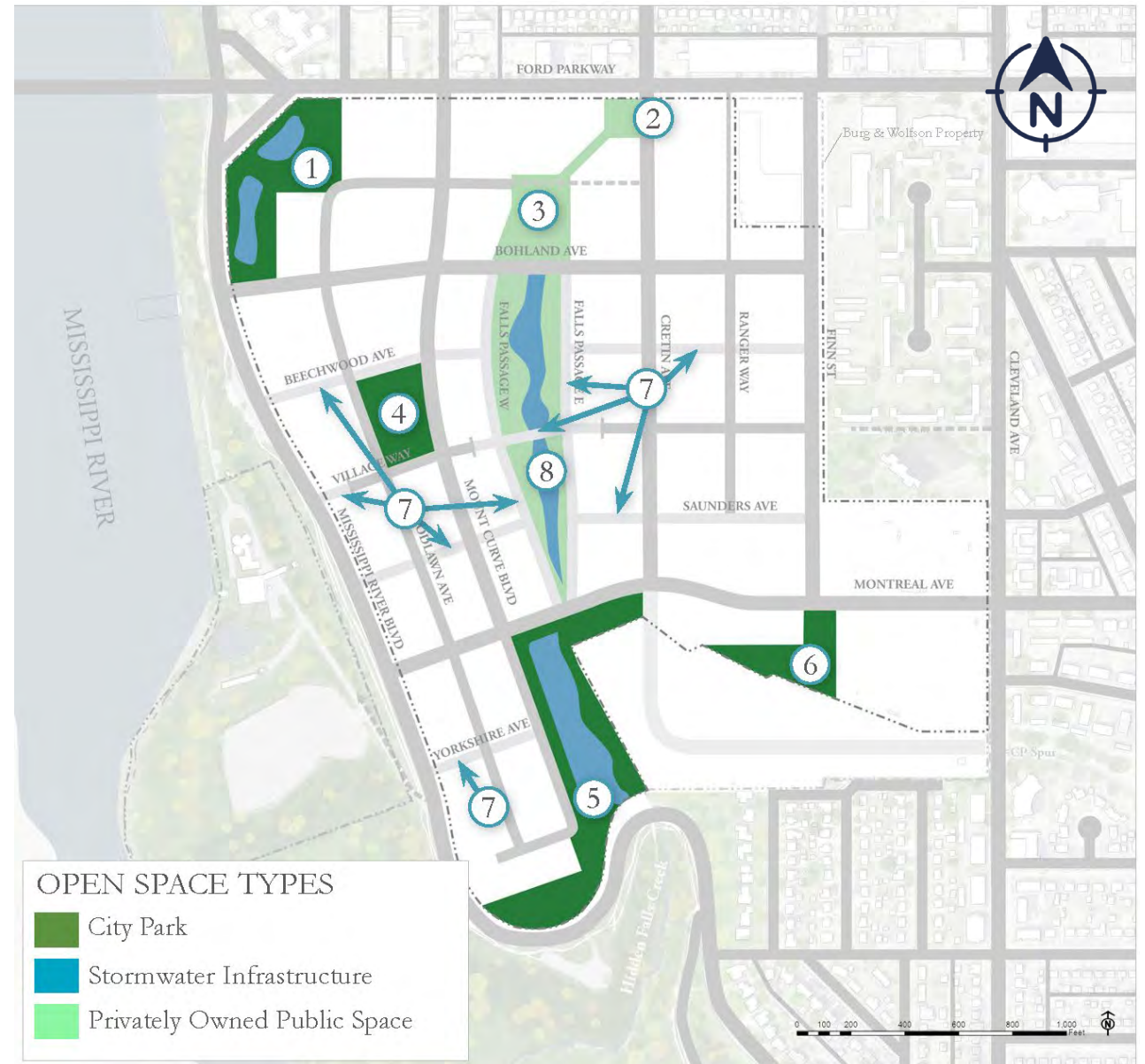
# Highland Bridge Park System

## City Parks

- ① Park A
- ④ Park B
- ⑤ Park C
- ⑥ Park D

## Civic Parks

- ② Outlot B
- ③ Outlot C
- ⑧ Outlot D
- ⑦ Shared Bike/Ped Paths





# Highland Bridge Timeline | Milestones

- **Park A and Park C**
  - Construction Started in Park C
- *Outlot C & Outlot D*
  - Construction Started – Fall 2020
- **Park B and Park D**
  - 90% Plans – November 2020
  - Construction – 2022

# Questions or Comments?

Please let us know if you have any comments or questions regarding the information that has been presented so far and we will respond to them as we receive them.



# Comments to Date – what we have heard

## **Approval of Highland Bridge Park Designs** **Highland Bridge Parks Advisory Committee (PAC) Input** PAC Comments and Design Team responses

*We have developed a summary of PAC comments that are broken into four categories and represent an overview of the comments received from the PAC members through meetings and “assignments” through the process. Duplicate comments are not recorded and comments that are simply encouraging are not included in this summary. Full comments are available on the City’s website under the Community Engagement documents for the project.*

*Four major categories*

*Amenities and Activities, Design, Environmental, Operations*

# FACTORS OF DESIGN & PRIORITIES

## Public Priorities Activities & Amenities

Surveys, Meetings,  
Input, Ideas, etc.



## System Needs Parks Department

Maintenance,  
Planning, Recreation



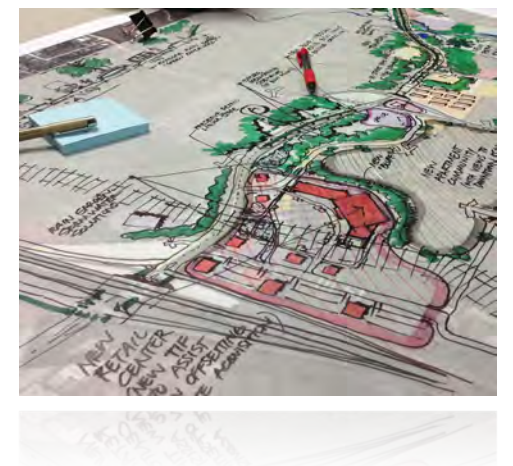
## Budget Realistic

Infrastructure,  
Maintenance,  
Balance



## Design Physical Layout

Program, Character,  
Context, Stormwater





# Design Update on Park A



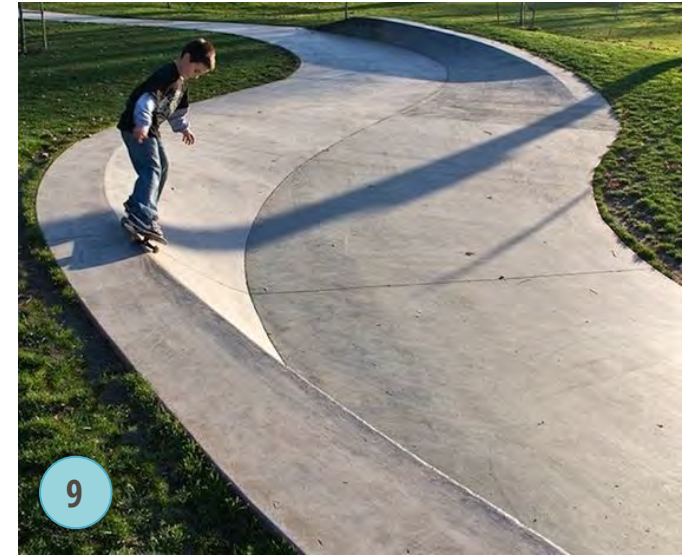


# Design Update on Park A





# Design Update on Park A – Skate Components





# Design Update on Park A – Park Components



Highland Bridge



# Design Update on Park C



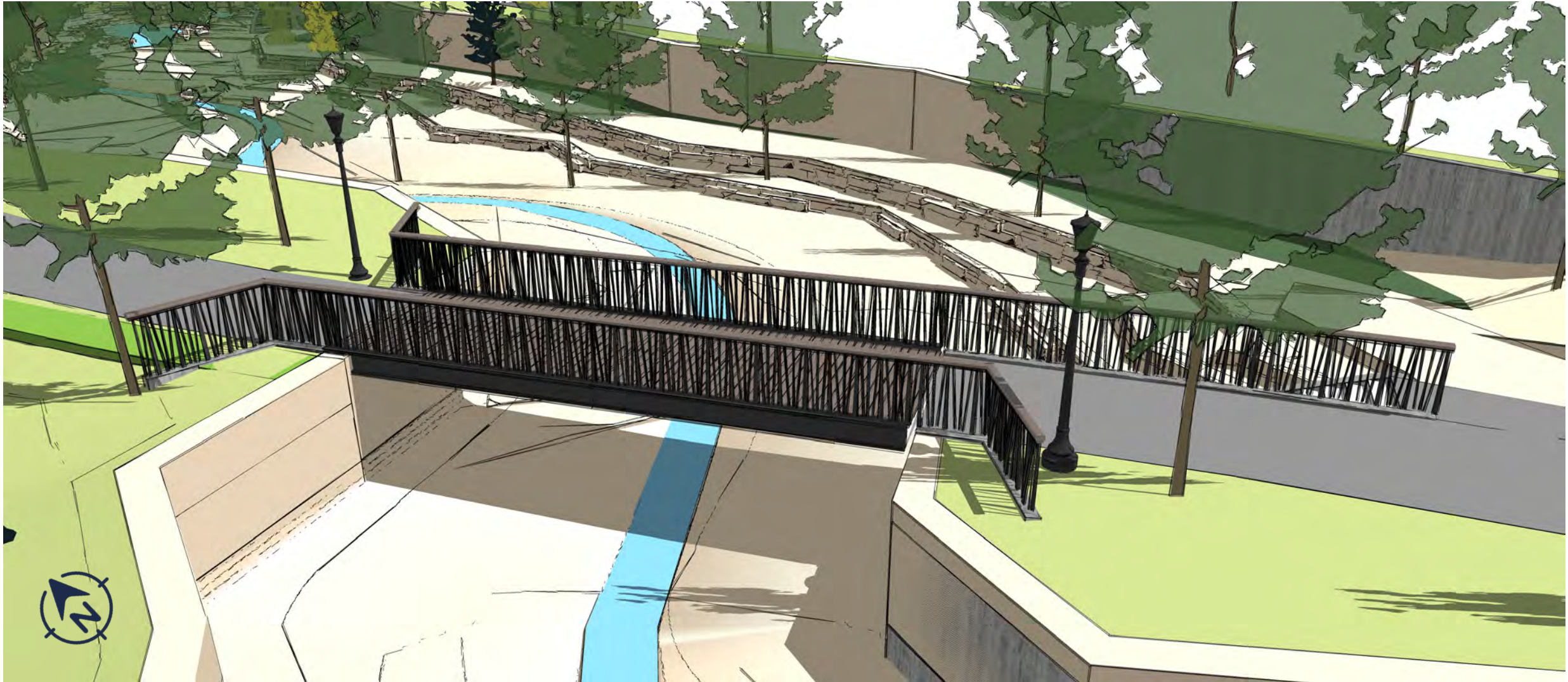


# Design Update on Park C



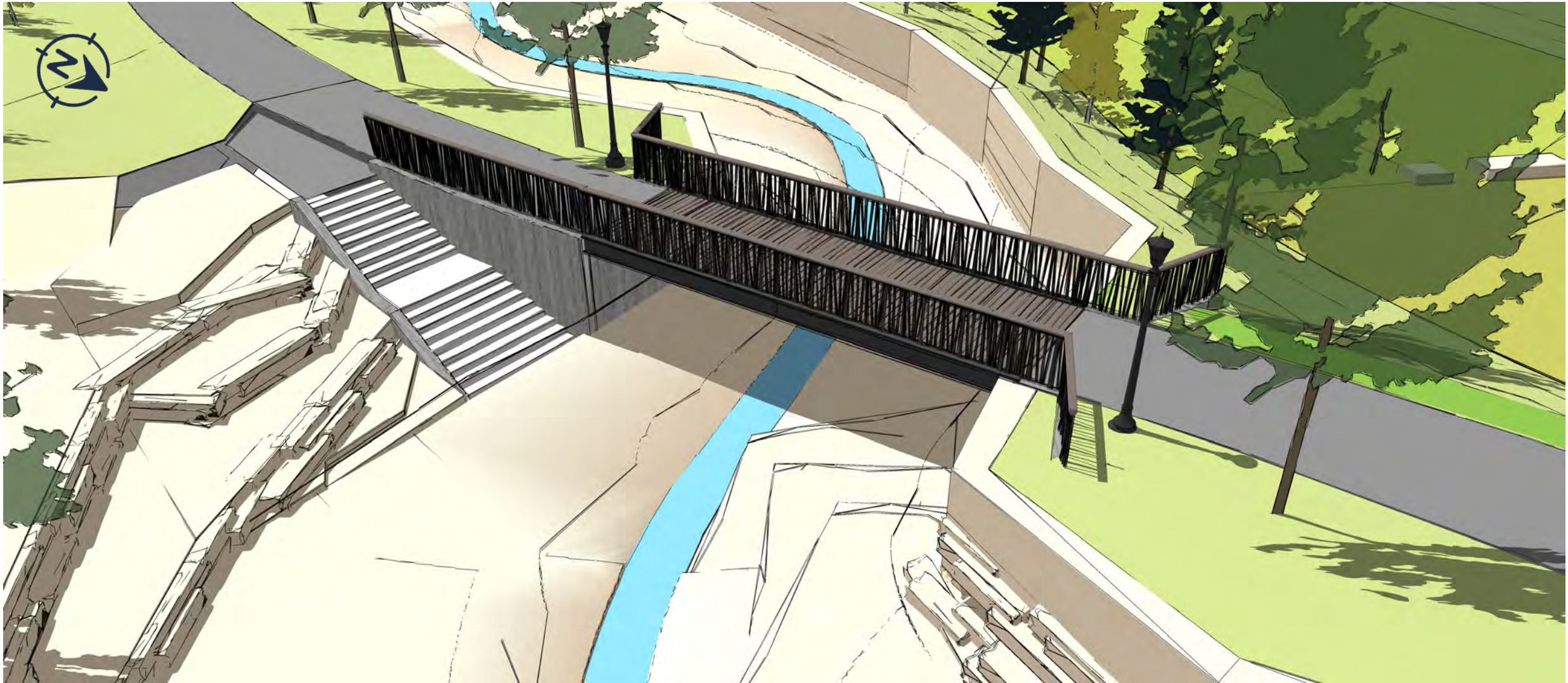


# Design Update on Park C





# Design Update on Park C



Highland Bridge



# Design Update on Park C – Ravine Character



Highland Bridge





# Design Update on Park C





# Design Update on Park C



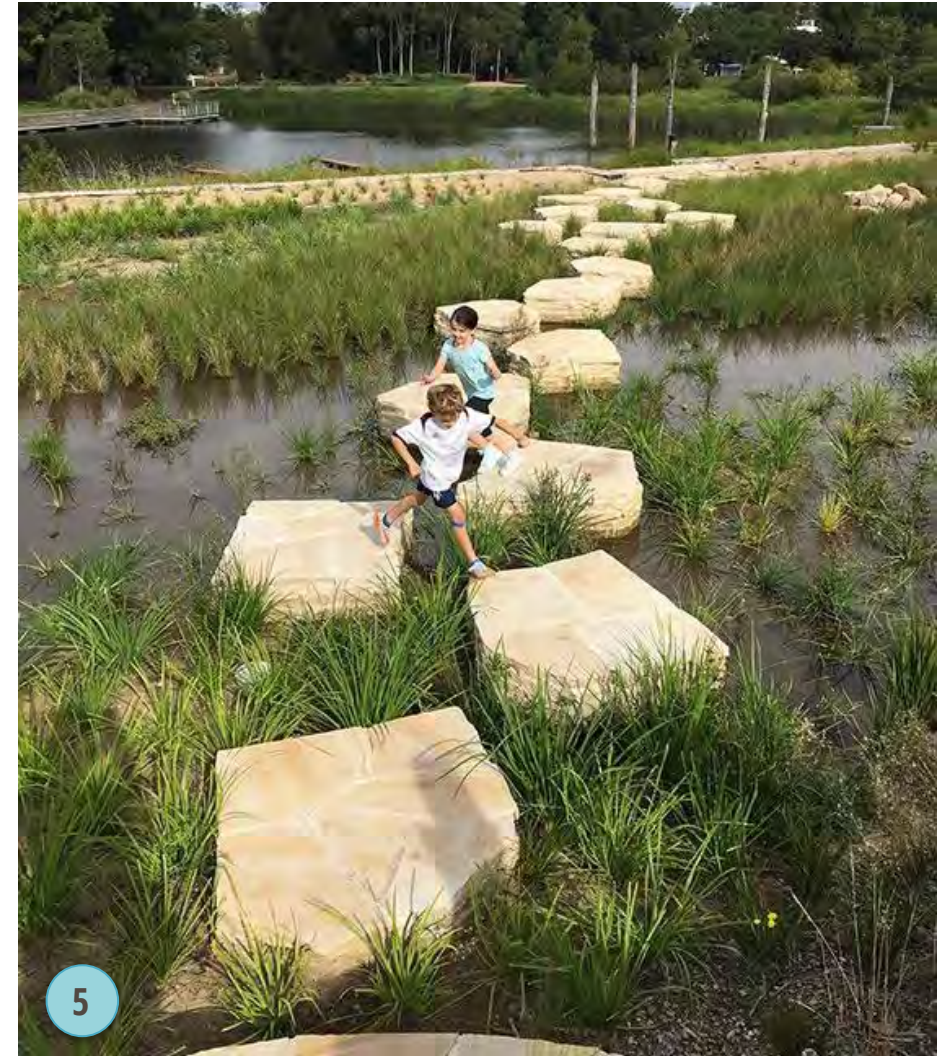


# Design Update on Park C





# Design Update on Park C – Amenities





# Design Update on Park C



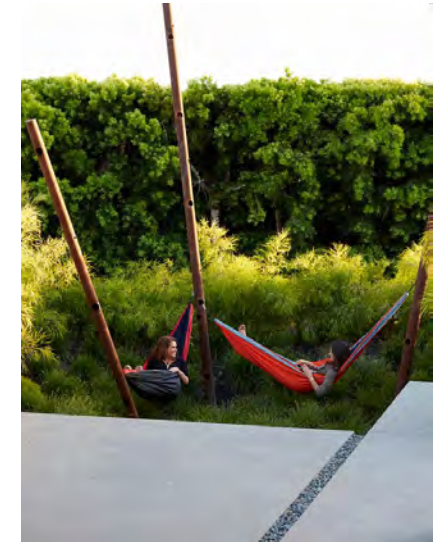


# Design Update on Park C



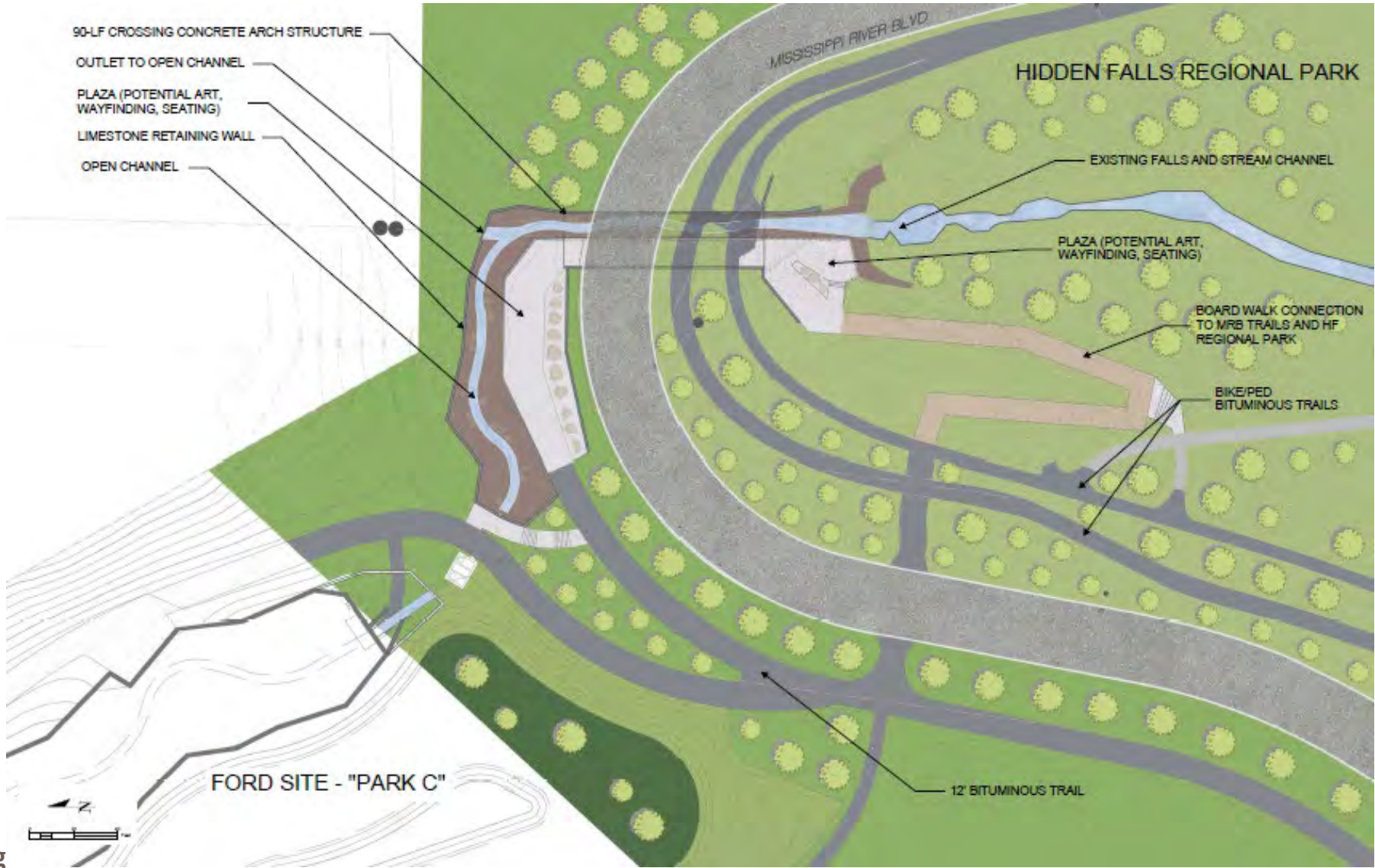


# Design Update on Park C – South Park Amenities





# MRB Crossing





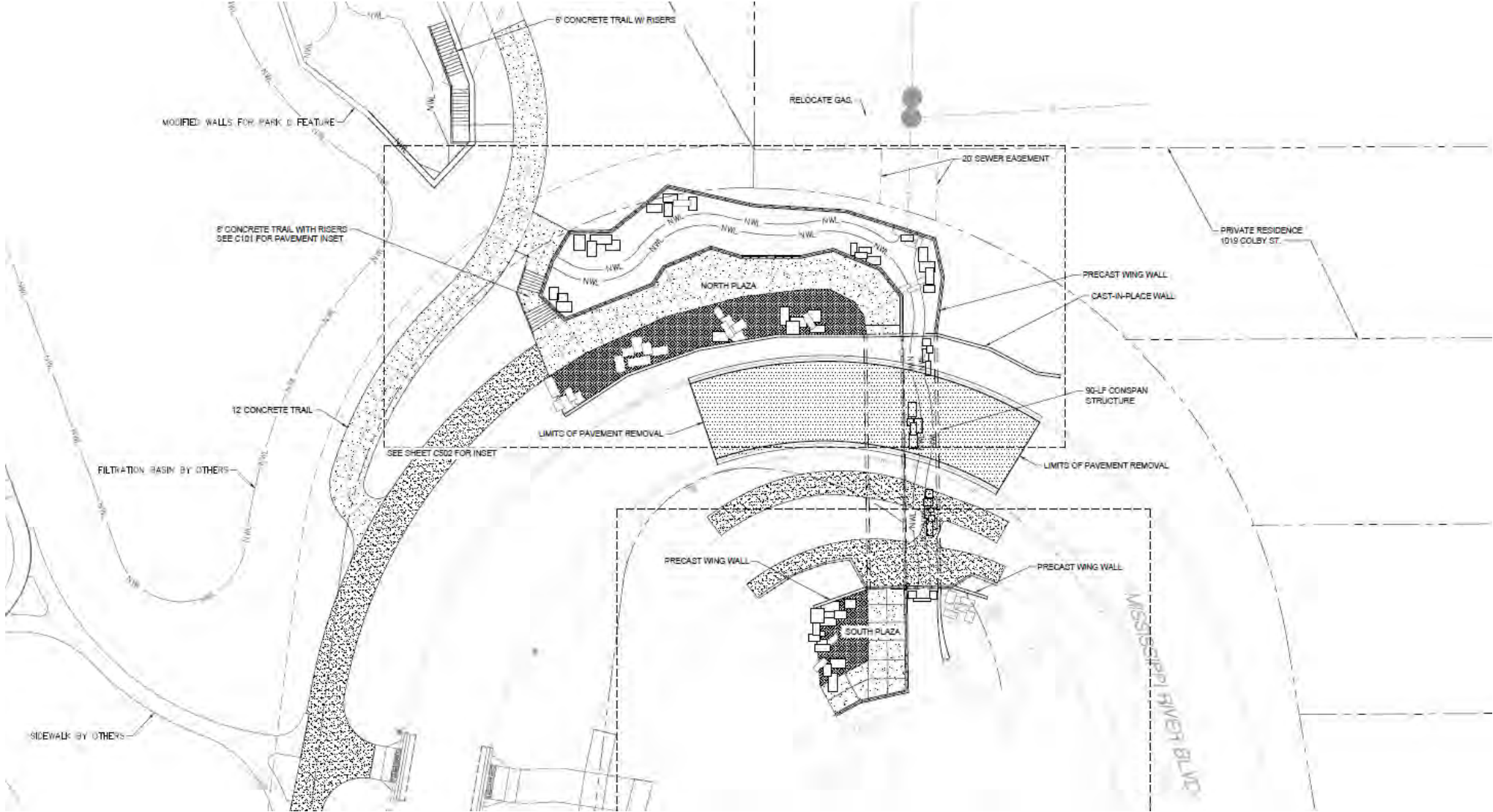
# MRB Crossing



Highland Bridge



# MRB Crossing



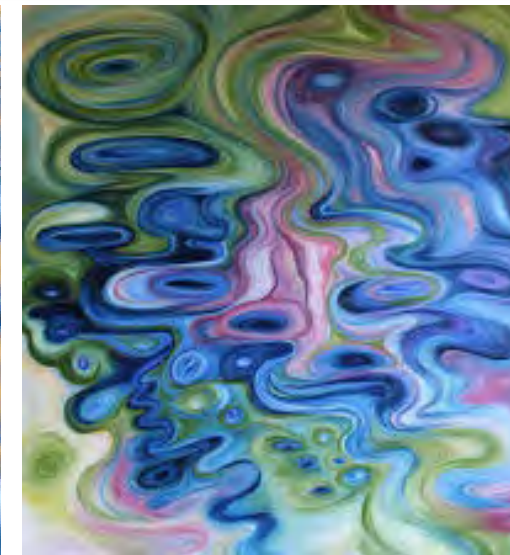


# Questions or Comments?

Please let us know if you have any comments or questions regarding the information that has been presented so far and we will respond to them as we receive them.



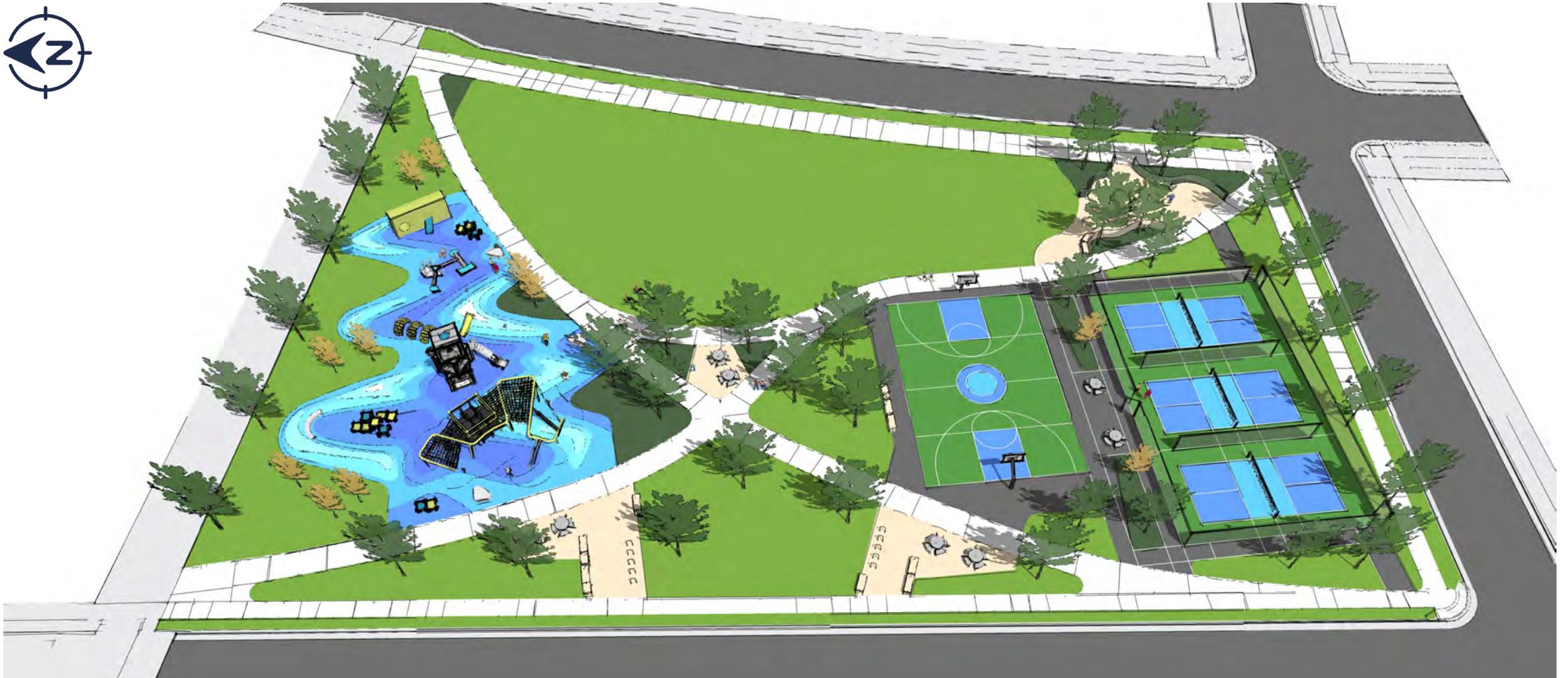
# Park B Update



Highland Bridge



# Parks B Update





# Parks B Update



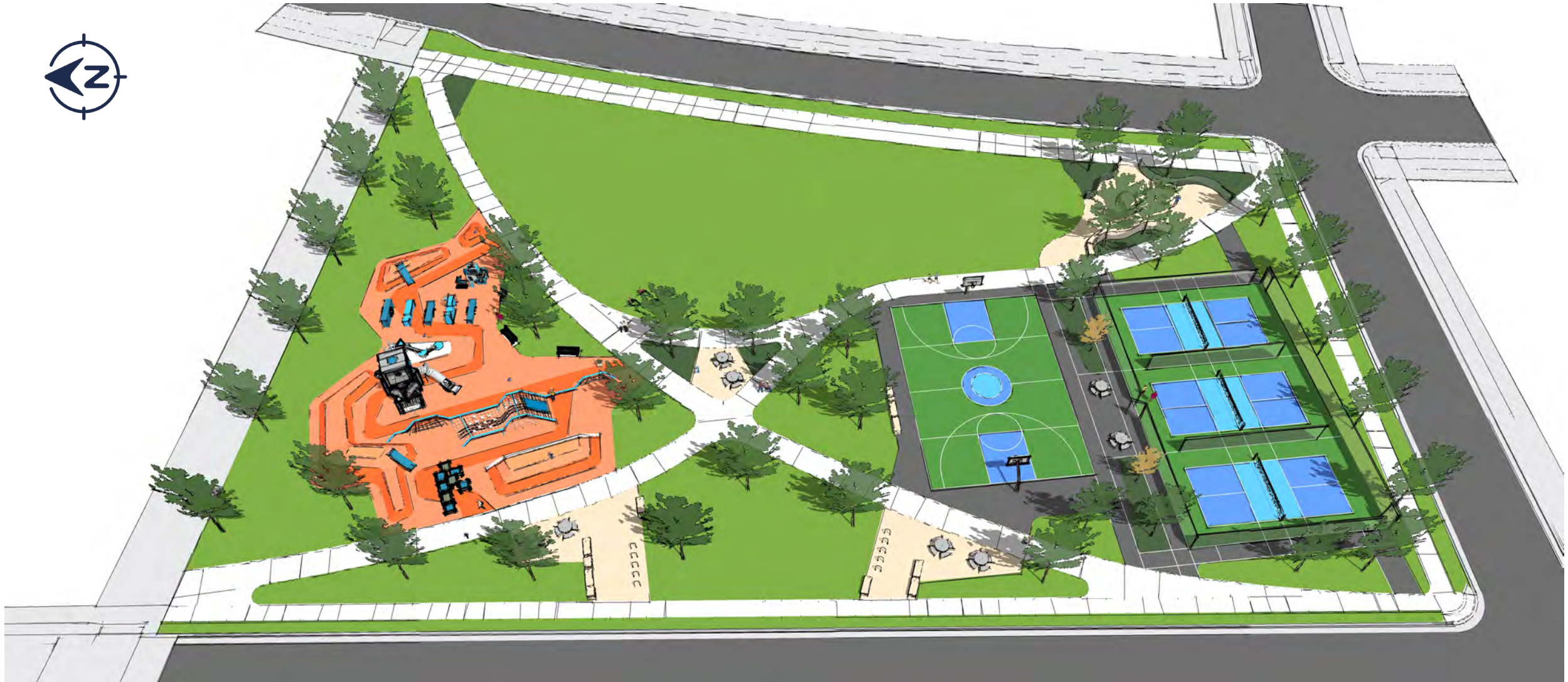


# Parks B Update





# Parks B Update





# Parks B Update





# Parks B Update





# Parks B Update





# Parks B Update





# Park B – Park Components



1

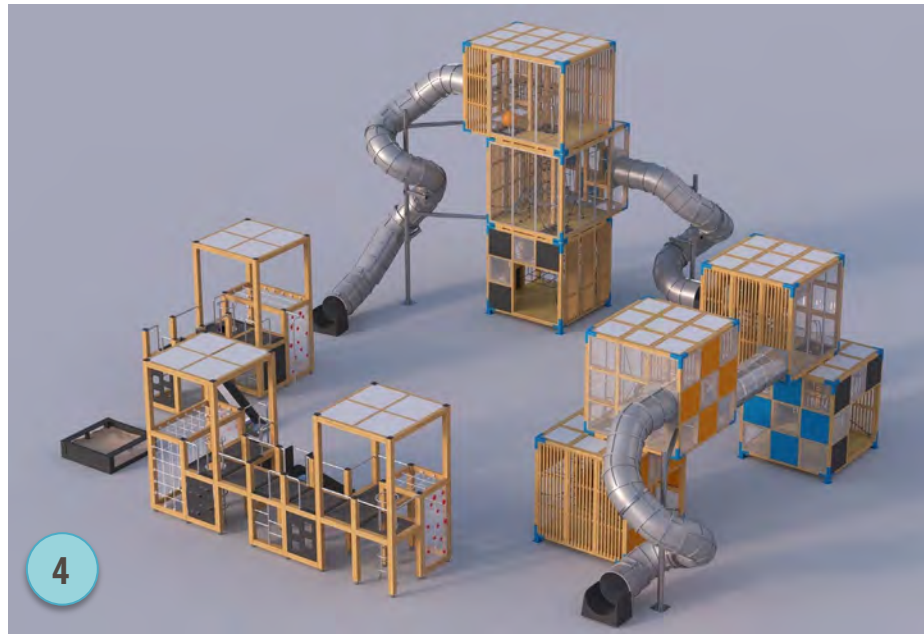
Highland Bridge



2



3



4



5



# Park B – Park Components

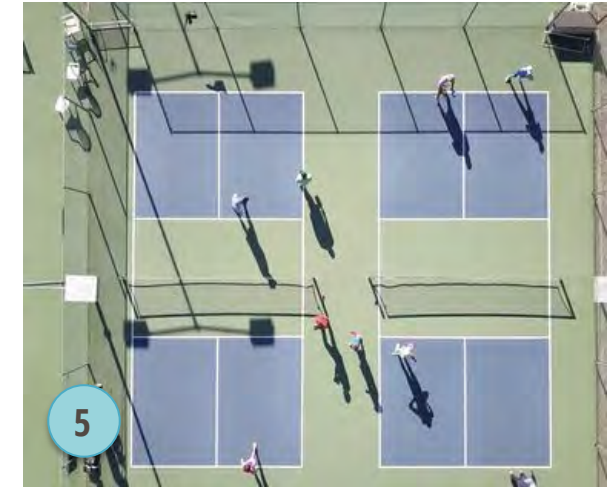




# Park B – Park Components

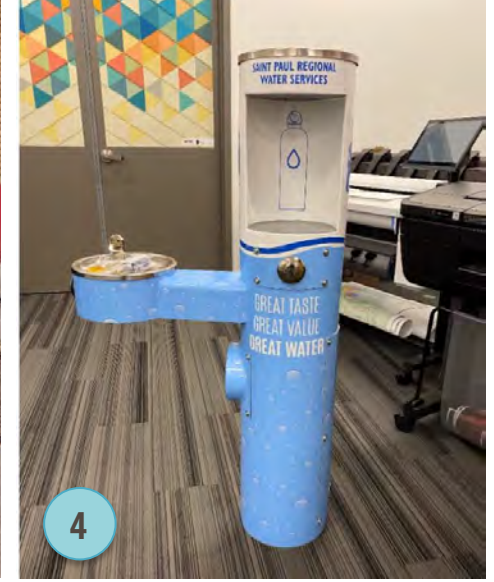
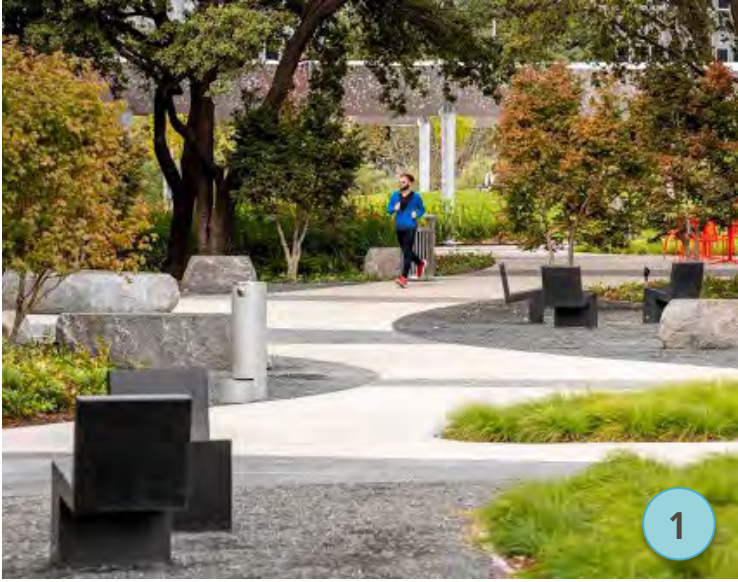


Highland Bridge





# Park B – Park Components



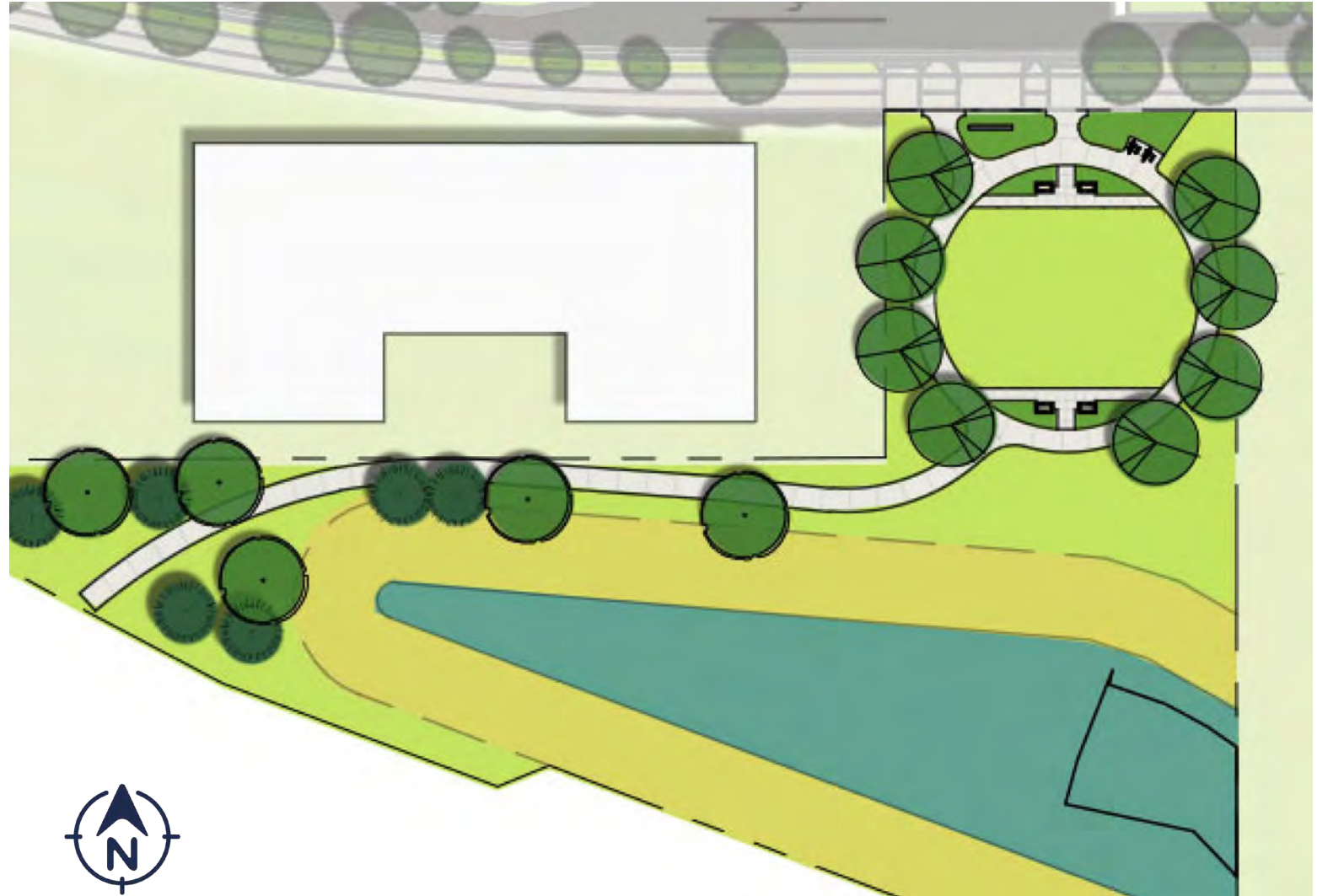


# Questions or Comments?

Please let us know if you have any comments or questions regarding the information that has been presented so far and we will respond to them as we receive them.



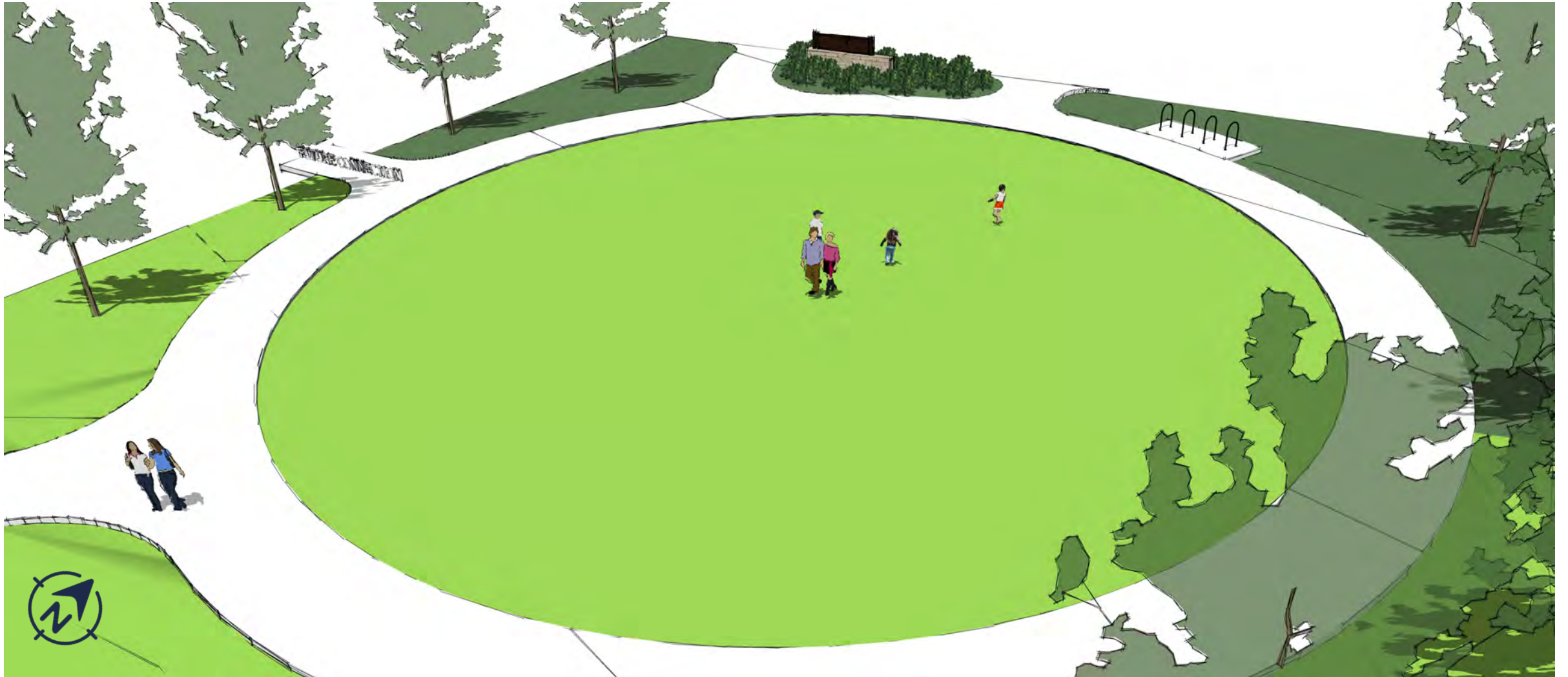
# Park D Update



Highland Bridge



# Park D Update





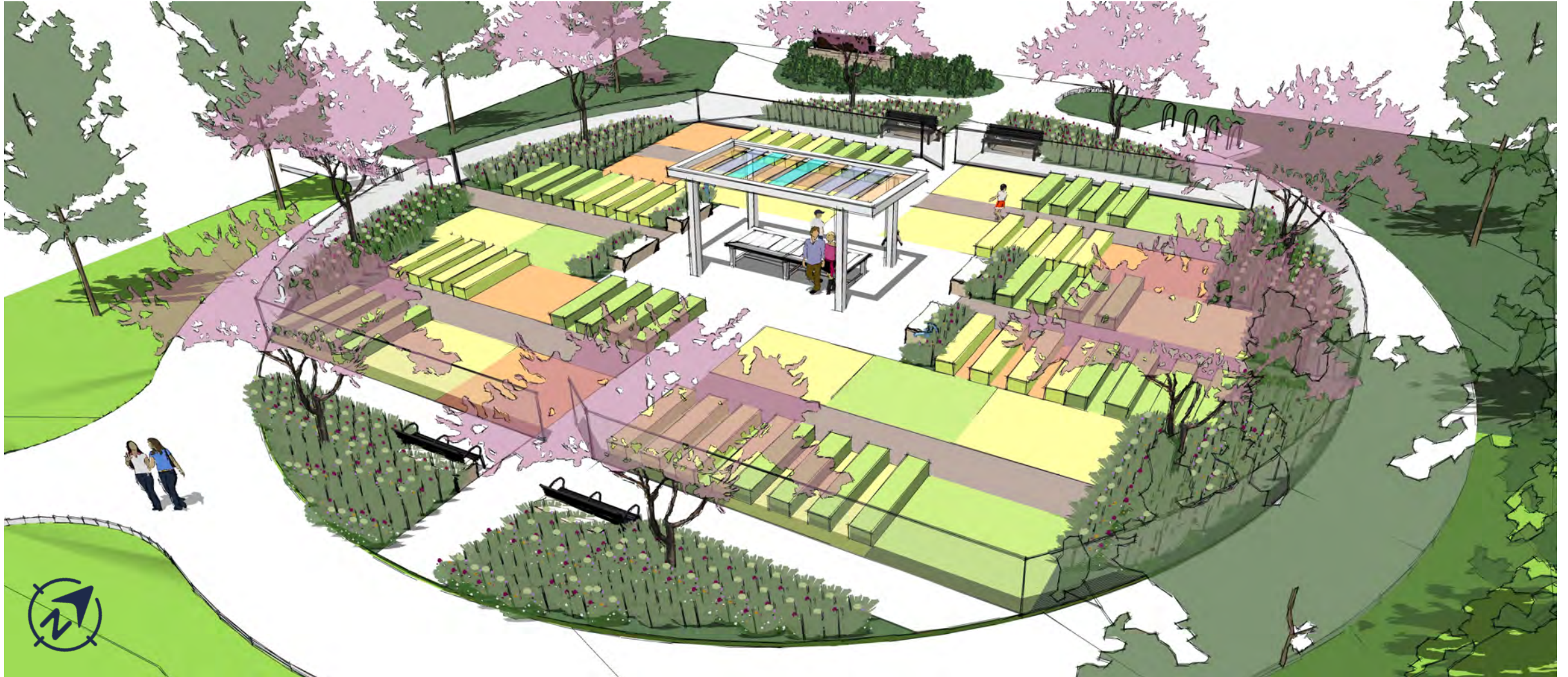
# Park D Update





# Park D Update

(possible future phase with community garden group)





# Park and Civic Space Distribution

Highland Bridge

## Parks and Civic Space Activities and Amenities

Activities and Amenities	Park A	Park B	Park C	Park D	Outlot B	Outlot C	Outlot D	Highland Ball
	Multiuse flex Lawn	LG Playground area	Nature play area	Open lawn	Water feature	Event lawn	Water Feature(pond)	Ball fields
	Skate trail / bowls	Multiuse flex Lawn	Adult fitness area	Seating	Sculpture focal point	Event plaza	Open Lawns	Concession building
	Bocce Ball courts	Basketball court	Volleyball courts	Trails	Seating	Seating	Canoe/Kayak access	Playground area*
	Seating	Pickleball courts	Shelter structure	Wetland and buffer	Outdoor dining	Fair and Market Area	Ice Skating	Seating
	Walkways	Games tables	Multiuse flex lawn	Community Garden*		Yard Games	Model Boats	Open Lawn*
	Water fountain	Seating	Activity / games lawn			Interpretive features	Performance Terrace	Shelter*
	Boardwalk / Platform	Walkways	Dog Park				Seating	Storage/Training Bldg*
		Water feature	Picnic area				Hammocking	
		Pet relief area	Hammocking	*space provided			Seat Swings	
		Water fountains	Seating	requires community			Plazas	*future development
			Walkways/trails	initiative			Water trail	
			Bedrock ravine				Interpretive features	
			Pools and waterfalls				Garden room	
			Natural landscape				Pedestrian Bridge	
			Interpretive features				Trails	
			Pedestrian Bridge				Pet relief area	
			Water fountains				Library structure	



# Park Naming Process

**Geographic names** The purpose for using a geographic name for a park site is to enable the public to identify the site's location.

Hamline Hague Park  
Midway Peace Park

**Historic names** The purpose of using a historic name for a park site is to enable the public to identify the site's location and to educate the public about the site's history.

Crosby Farm Regional Park  
(Frank) Boyd Park

**Functional names** The purpose of using a functional name for a park site is to enable the public to identify the purpose, services, or programs provided at the site.

Recreation Center  
Water Park  
Dog Park

**Memorial names** The purpose of using an individual's name for a park site is primarily to honor that person and his or her contribution to the parks' system.

Bruce Vento Nature Sanctuary  
Jimmy Lee Recreation Center



# Park Naming Process

1. Any Saint Paul resident, organization, agency, or business may recommend names for new park sites or name changes for existing park sites.
2. **Requests shall be addressed to the Director of Parks and Recreation** but sent to [ellen.stewart@ci.stpaul.mn.us](mailto:ellen.stewart@ci.stpaul.mn.us) Closing date TBA (early 2021)
3. **Director shall forward the request and the staff recommendation to the Parks and Recreation Commission** for its review and comment.
4. The Parks and Recreation Commission shall present its recommendation **to the Mayor and City Council for final action.** (tentatively Early Q2 2021).



# Questions or Comments

Please let us know if you have any comments or questions regarding the information that has been presented so far and we will respond to them as we receive them.



# Design Update on Construction





# Design Update on Construction





# Design Update on Construction





# Design Update on Construction





# Design Update on Construction





# Design Update on Construction





# Design Update on Construction





# Design Update on Construction





# Design Update on Construction





# Design Update on Construction





# HOMEWORK – Conversations Part Two



## What is a Conversation?

A digital discussion hosted through a phone call or video conferencing solution like Webex, Zoom, Microsoft Teams or Facebook. Groups will meet for 20-30 minute conversation to share thoughts, connect together, and discuss the parks development and its desired amenities and programming. This is a perfect opportunity to connect and grow with others on the PAC and have the ability to collaborate and discuss the project in an open and creative environment



# HOMEWORK – Conversations Part Two



## Conversation Question

Here are some questions to stimulate conversation. Please take turns asking and answering the questions.

### Questions

We would like to get your feedback on the park development that has been completed to date!

1. Are the park designs meeting the needs of the community?
2. What is missing from the proposed park system in Highland Park?
3. Have the park designs responded to your input?



# HOMEWORK – Conversations Part Two



## Conversation Review

Once your conversation is complete, please summarize your thoughts and discussion in a brief or in-depth written review of the questions and discussion that happened. You can summarize your conversation individually or as a group and submit a written response to capture the conversation.

These summary's will be used to help further define design direction and prioritization of the Parks amenities and activities.



# HOMEWORK – Conversations



## Conversation Groups

### Group A:

- Bobak Rozavi
- Michelle Doyle
- John Mountain

### Group B:

- Eric Weiss
- Malika Billingslea
- Patty Partridge

### Group C:

- Frank Jossi
- Andy Trcka
- Paul Pappas

### Group D:

- Karen Welle
- Emily Reimer
- Colleen Zuro White



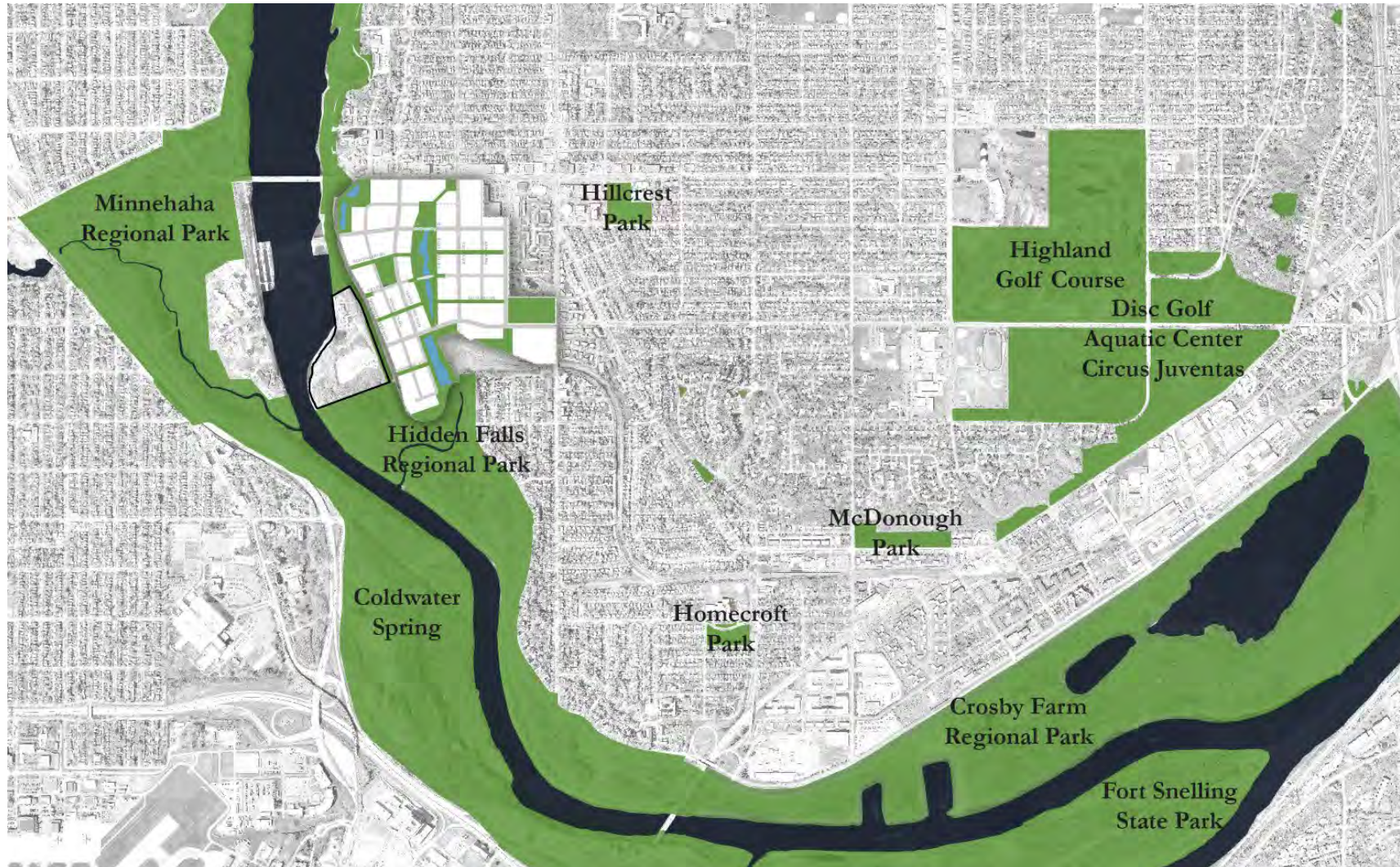
# Next Steps

- Presentation to the Parks and Recreation Commission
- Group Assignment
- 90% Set is due by November for Parks B & D
- Next PAC Meeting #5  
End of January
- Public Virtual Open House
- Site Visit
- Construction Continues

**Questions, Comments, Feedback?**



# Area Parks, Trails and Open Space



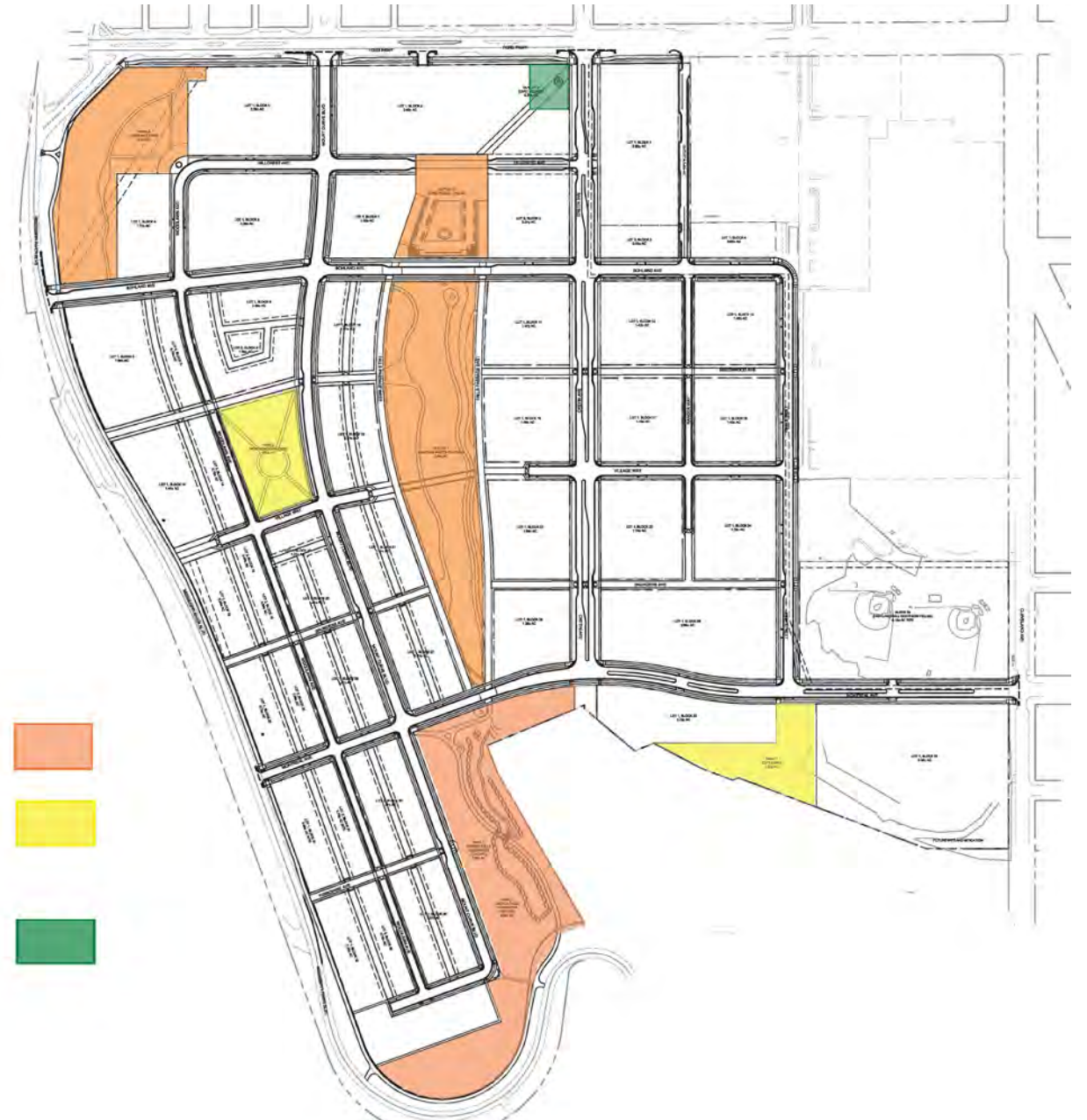


# THE FORD SITE PARK SYSTEM

2021 Complete Parks Facilities or Public Open Spaces

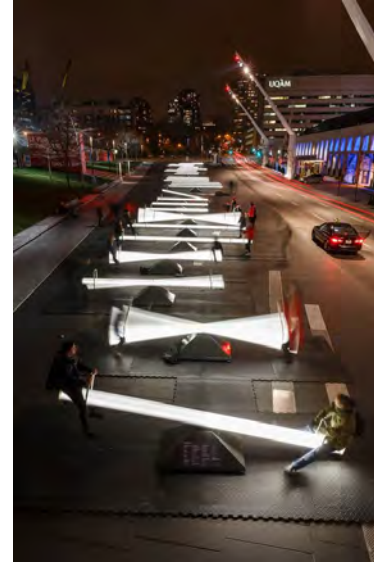
2022 Complete Parks Facilities or Public Open Spaces

2023 Complete Parks Facilities or Public Open Spaces





# Art



Highland Bridge



# Interpretation



Highland Bridge