



# WELCOME!

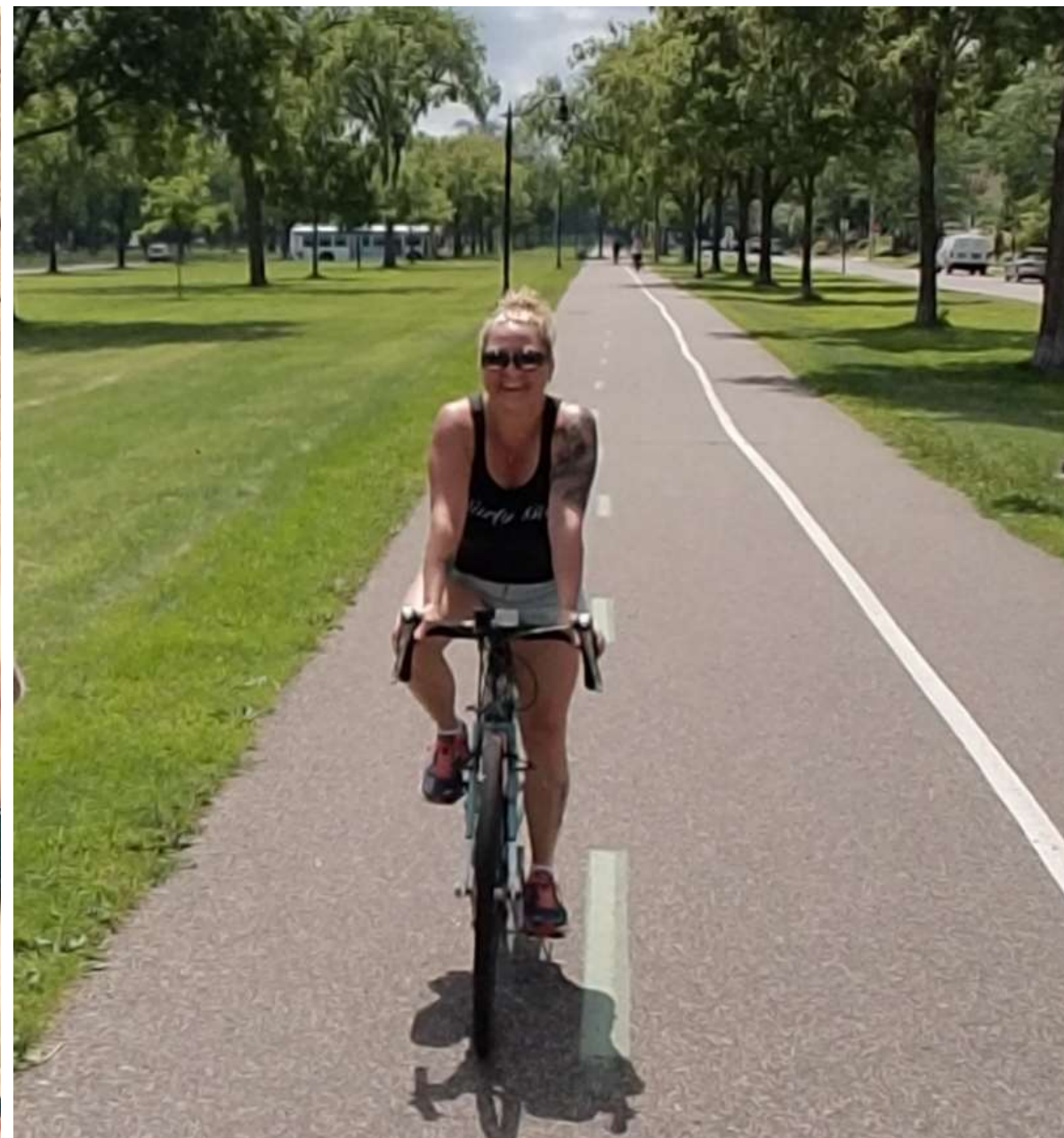
**Ford Construction Logistics Meeting**  
March 10, 2020



- Team Introduction
- Schedule
- Site Logistics
- Demolition
- Construction Hours & Noise
- 2020 & 2021 Activities
- Haul Routes
- Phasing Video
- Scheduled Closures
- Ongoing Communication
- Q & A













Start Site Removals	March 2020
Start Phase1 Utilities & Mass Earthwork	April 2020
Start Parks and Public Open Spaces	July 2020
90% Complete Phase 1 Utilities & Mass Earthwork	November 2020
Start Phase 1 Road Construction	May 2021
Offsite Improvements	Summer 2021
Complete Offsite Improvements	Summer 2021
Complete Phase 1 Roadways	Early Fall 2021
Complete Parks and Public Open Spaces	Late Fall 2021
Phase 1 Infrastructure Complete	Late Fall 2021











- **Construction Hours:**
  - Typical Work Week
    - Monday to Friday 7:00AM to 5:00PM
    - Extended hours 5:00PM to 7:00PM if necessary
    - Saturdays – Make up day due to schedule or weather
- **Construction Noise:**
  - Similar noises to past demolition activities
  - Activities generating noise:
    - Loading/Unloading Trucks
    - Concrete & Asphalt Demolition
    - Onsite Crushing
    - Limestone Bedrock Removal (Utilities Installation)

















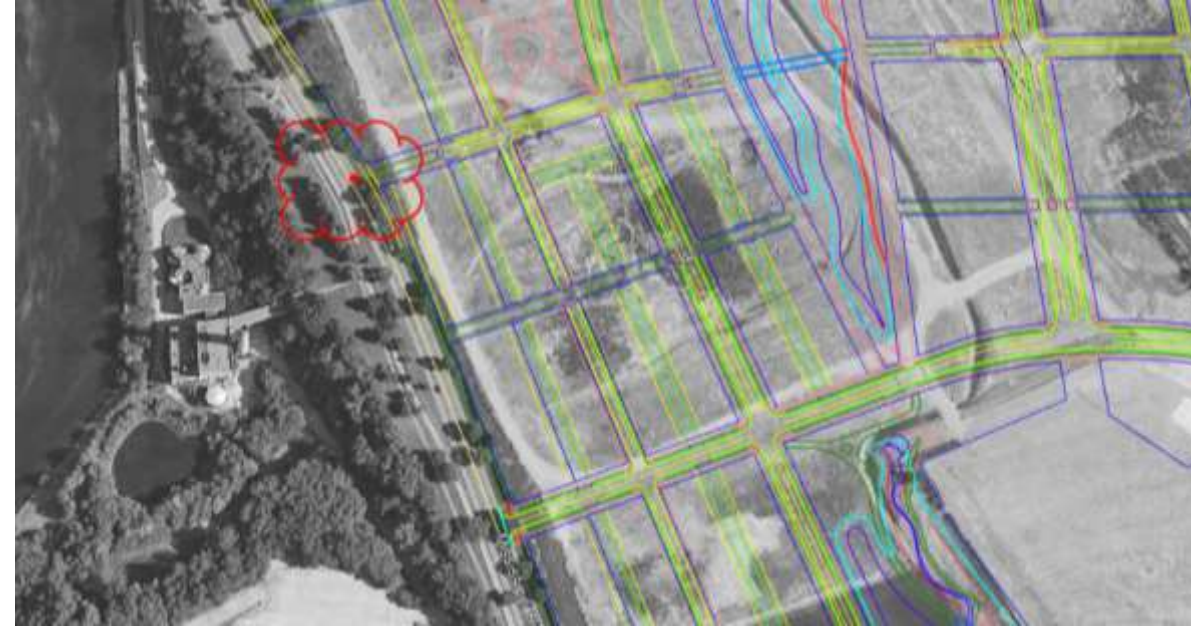
- 2020
  - Watermain connection – Ford Pkwy & Cretin
    - 1-2 week duration
  - Watermain Connection – Ford Pkwy & Mt. Curve
    - 1-2 week duration
  - Watermain Connection – Cleveland & Montreal
    - 1-2 week duration



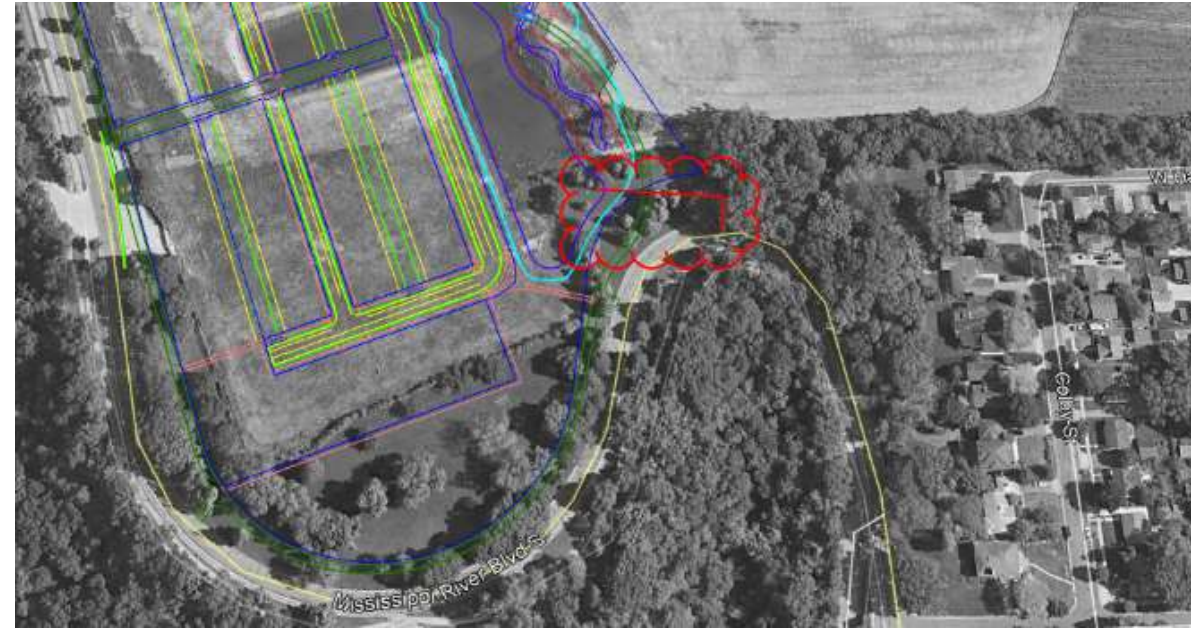
- Summer/Fall 2021
  - Cretin & Ford Pkwy – Intersection Reconstruction
  - Mt. Curve & Ford Pkwy – Intersection Reconstruction
  - Cleveland & Montreal – Intersection Reconstruction



- Summer 2020:
  - Mississippi River Blvd
    - New sanitary drop shaft
    - 2-3 month duration
- Note:
  - No bike/walking path closure associated with sanitary drop shaft.



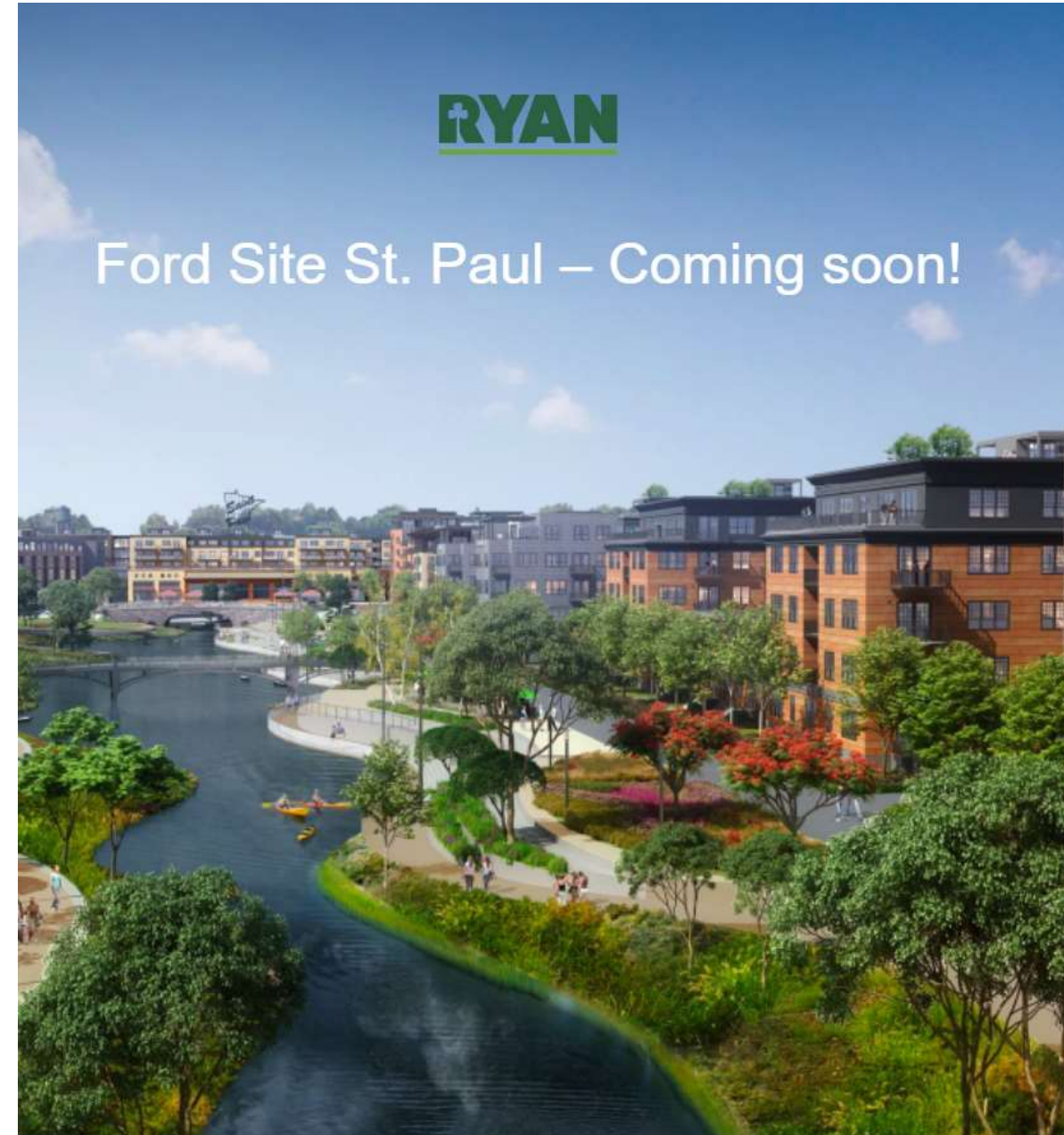
- Summer 2020:
  - Mississippi River Blvd
    - New stormwater connection to Hidden Falls
    - 1-2 months duration
- Note:
  - Intermittent bike/walking path closure associated with stormwater connection







- **Highland District Council**  
[www.highlanddistrictcouncil.org](http://www.highlanddistrictcouncil.org)
- **City of St. Paul**  
[www.stpaul.gov](http://www.stpaul.gov)
- **Ford Website**  
[www.fordsitestpaul.com](http://www.fordsitestpaul.com)
- **Ryan Companies**  
[www.ryancompanies.com](http://www.ryancompanies.com)
- **Constant Contact**  
Get signed up for updates today!





# Thank you!