

FORD SITE PARKS ADVISORY COMMITTEE MEETING TWO

05.28.2020

RYAN CONFLUENCE



IN ASSOCIATION WITH THE
City of St. Paul
Department of Parks & Recreation



AGENDA

Introductions

Overview of Prioritization Exercise

Design update on Parks A and C at 60%

- Amenities and Activities in Parks
- Model walk through
- Options for climbing and skate trail features in Park A
- Options for play, fitness and courts in Park C
- Park C ravine character

Overview of Civic Spaces at 60%

Parks B and D update

Homework

Introduction to Conversations

Next Steps – Parks A and C at 90%
– Parks B and D at 60%



Project Team Contacts



Nick Koch

Ryan Companies
Phone: 612-492-4678
Nick.Koch@RyanCompanies.com



Mac Alberts

Ryan Companies
Phone: 612-492-4313
Mac.Alberts@RyanCompanies.com



Tony Barranco

Ryan Companies
Phone: 612-492-4339
Tony.Barranco@RyanCompanies.com



Maureen Michalski

Ryan Companies
Phone: 612-492-4603
Maureen.Michalski@RyanCompanies.com



Ellen Stewart

Parks and Recreation
Phone: 651-266-6380
Ellen.Stewart@ci.stpaul.mn.us



Terry Minarik

Confluence
Phone: 612-333-3702 x501
TMinarik@ThinkConfluence.com



Brad Aldrich

Confluence
Phone: 612-333-3702 x503
BAldrich@ThinkConfluence.com



Project Background

Ford Site Project Studies

Since 2006, when Ford Motor Company announced its intent to close the plant, the City of Saint Paul has been working actively to plan for the site's future.

Professional Studies

- A total of 14 professional studies conducted by the City and additional studies by Ford Motor Company have examined a wide range of topics, such as the potential of industrial reuse, a geotechnical analysis of the tunnels under the site, open space priorities, sustainable design, stormwater management, and traffic impacts.
- The studies were essential to understand opportunities for and limitations on the redevelopment of the site – economically, environmentally, socially, and within the context of the community. The studies identified infrastructure efficiencies, cost-effectiveness, opportunities for environment design and conservation, and how to strike a balance between development and the creation of vibrant public spaces
- The Ford Site Zoning and Public Realm Master Plan, adopted by the Saint Paul City Council in 2017, is the culmination of a decade of planning for the site. It provides a framework to guide mixed-use redevelopment of the 122-acre main assembly plant parcel and the adjacent 13-acre rail yard. It does not include the 22-acre river parcel ("Area C").

Community Engagement and Adoption

- Since 2007, the City has been seeking the community and other stakeholders' visions and priorities for the Ford site. The thousands of ideas and suggestions that we have received over the past 10 years, and through more than 140 public meetings of all sizes, have shaped the redevelopment framework for the site.

<https://www.stpaul.gov/departments/planning-economic-development/planning/ford-site-21st-century-community>



Role of Parks Advisory Committee (PAC)

The Parks Advisory Committee provides volunteer opportunities for stakeholders to share insight and resources and serve to build and sustain relationships between the community and the City of St. Paul. Members of the PAC are expected to represent the views of park users and to work collaboratively with each other and the project team to provide insight, feedback and information to the community about the project.

Responsibilities of PAC members include:

- Become knowledgeable about the Project and its goals,
- Understand and represent the park and recreation needs of the community and park users,
- Act as community liaisons for the project,
- Provide feedback on the park plans,
- Help identify priorities and needs within the Park System and within their communities,
- Provide insight on the direction of Park development,
- Report back to the community, on the design process, information presented, and the development of the parks,
- PAC members are expected to attend and participate in PAC meetings throughout the design process.

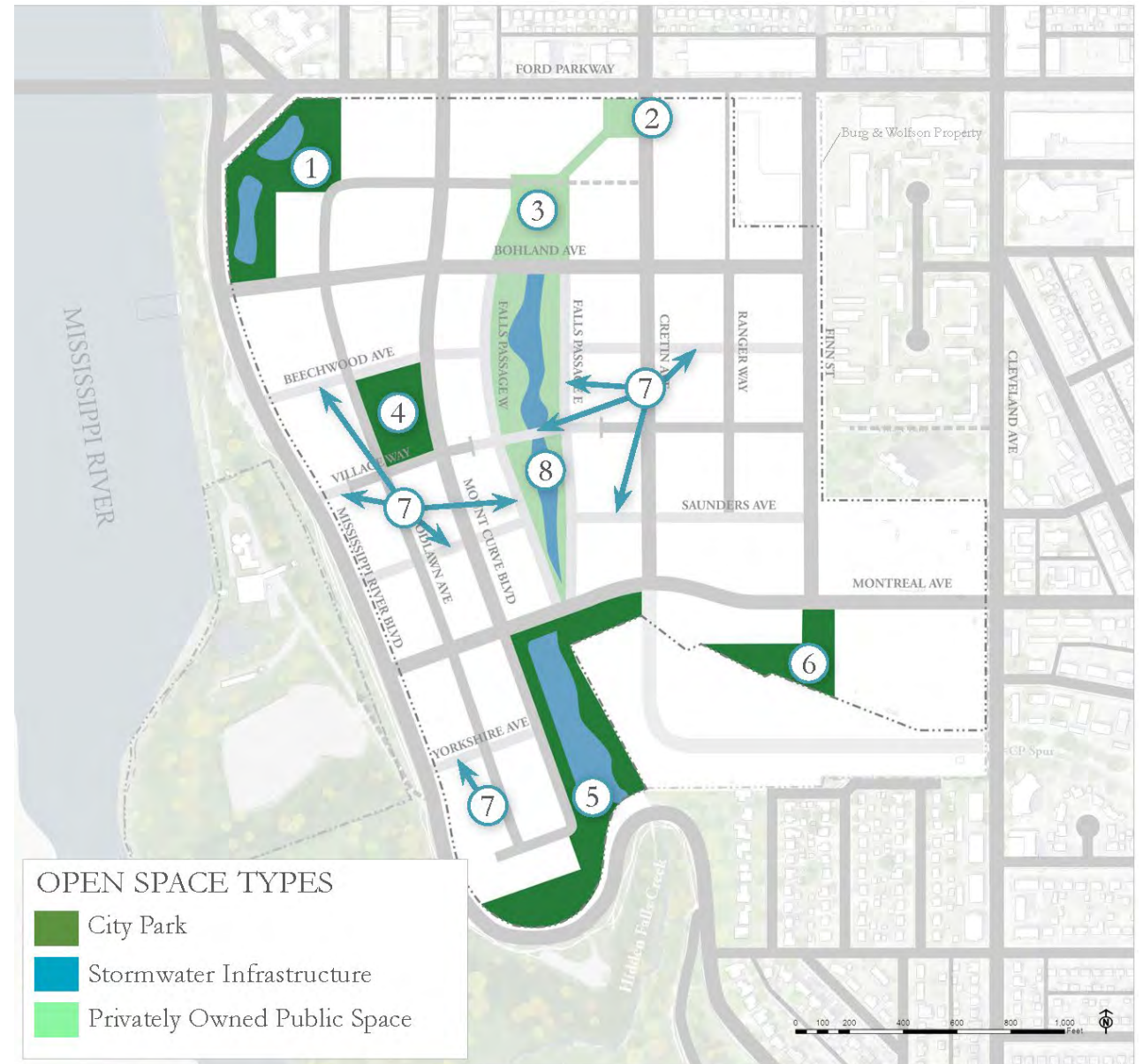
THE FORD SITE PARK SYSTEM

City Parks

- ① Gateway (Park A)
- ④ Neighborhood (Park B)
- ⑤ Hidden Falls Headwaters (Park C)
- ⑥ Community (Park D)

Civic Parks

- ② Civic Square (Outlot B)
- ③ Civic Plaza (Outlot C)
- ⑧ Central Water Feature (Outlot D)
- ⑦ Shared Bike/Ped Paths





Ford Site Redevelopment Timeline | Milestones

- May 2020 – 60% Parks, Open Space & 100% Infrastructure
- May 28, 2020 –PAC Meeting Two
- **Gateway (Park A) and Hidden Falls Headwaters (Park C)**
- *(Civic Plaza & Central Water)*
 - 90% Plans – June 2020
 - Construction – Fall 2020
- **Neighborhood (Park B) and City Park (Park D)**
 - 60% Plans – Sept 2020
 - Construction – 2022



Questions?

Please type any questions you have regarding the information that has been presented so far and we will answer them as we receive them.

Overview of Prioritization Exercise

Park A

Open Space Lawn, Skateboarding, Seating, Tables and Chairs, Pollinators, Native Grasses, Art, Hammocks

Park B

Open Space, Playground, Pickleball, Basketball, Seating, Skateboarding, Picnic Area, Tables and Chairs

Park C

Native Planting, Hammocking, Seating, Water Interaction, Nature Play, Shelter, Picnic Area, Dog Park, Tables

Park D

Dog Park, Community Garden, Seating, Basketball, Open Lawn, Native Planting





FACTORS OF DESIGN & PRIORITIES

Public Priorities Activities & Amenities

Surveys, Meetings,
Input, Ideas, etc.



System Needs Parks Department

Maintenance,
Planning, Recreation



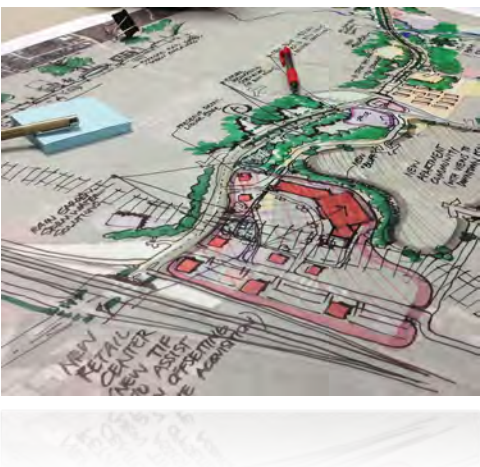
Budget Realistic

Infrastructure,
Maintenance, Balance

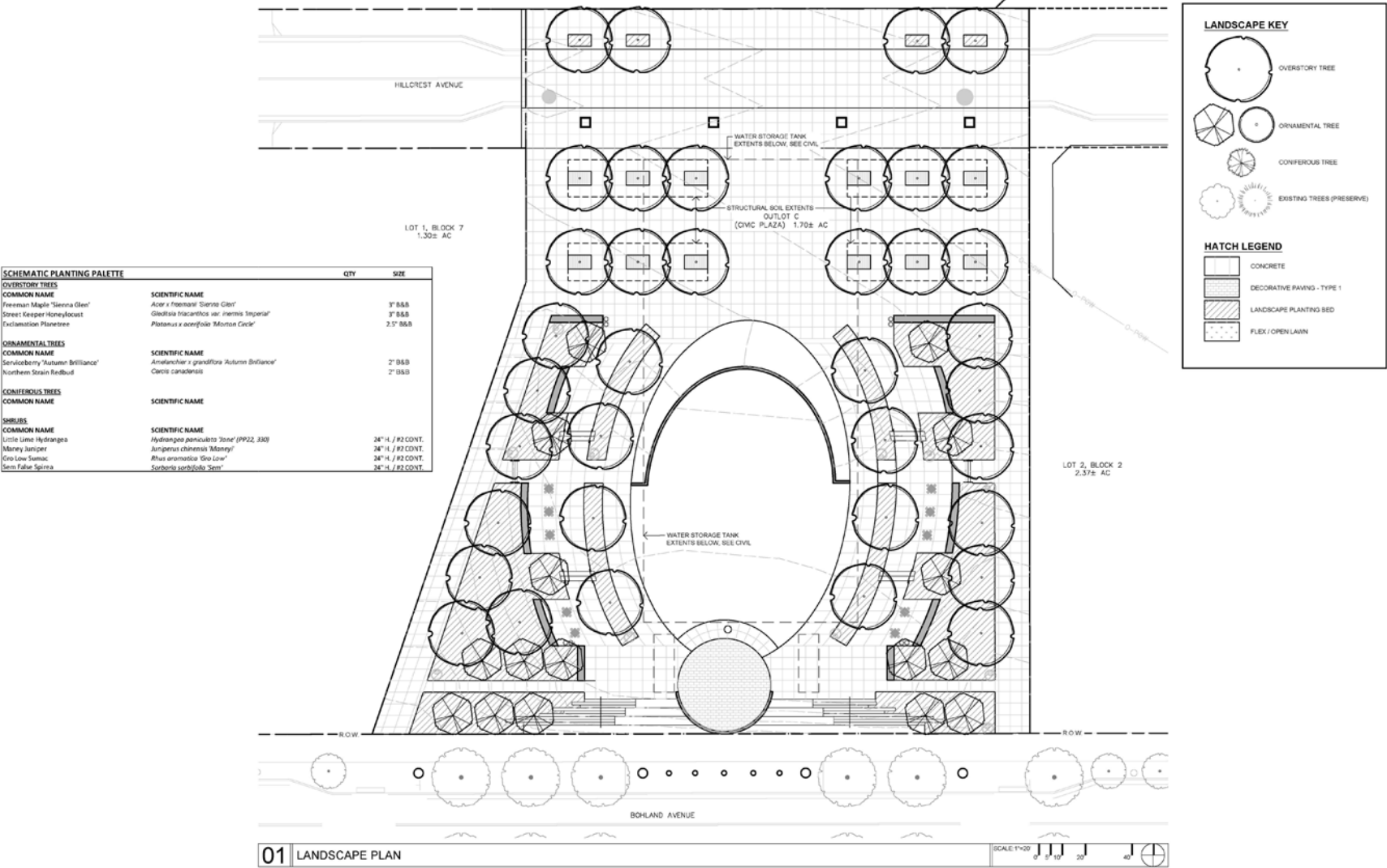


Design Physical Layout

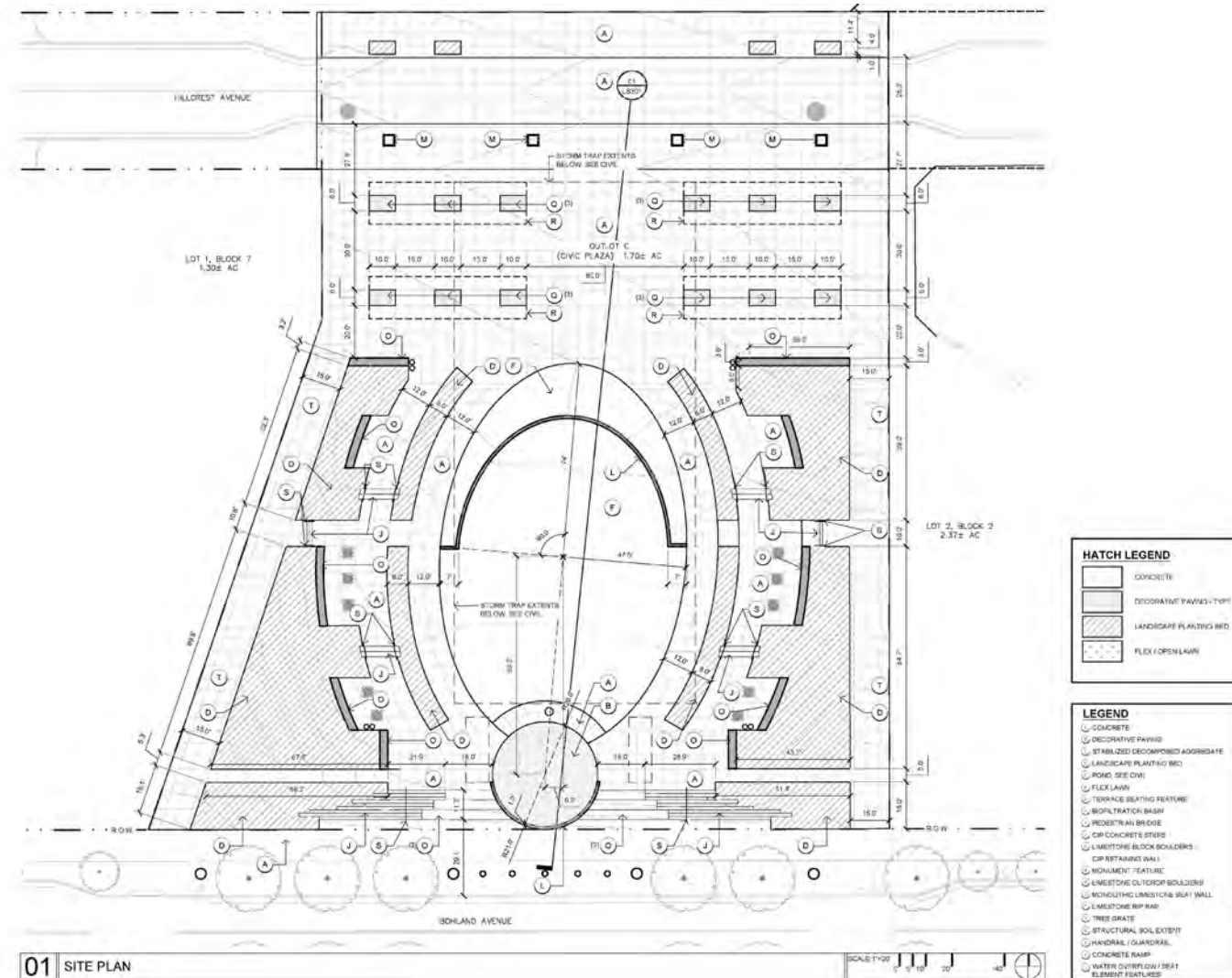
Program, Character,
Context, Stormwater



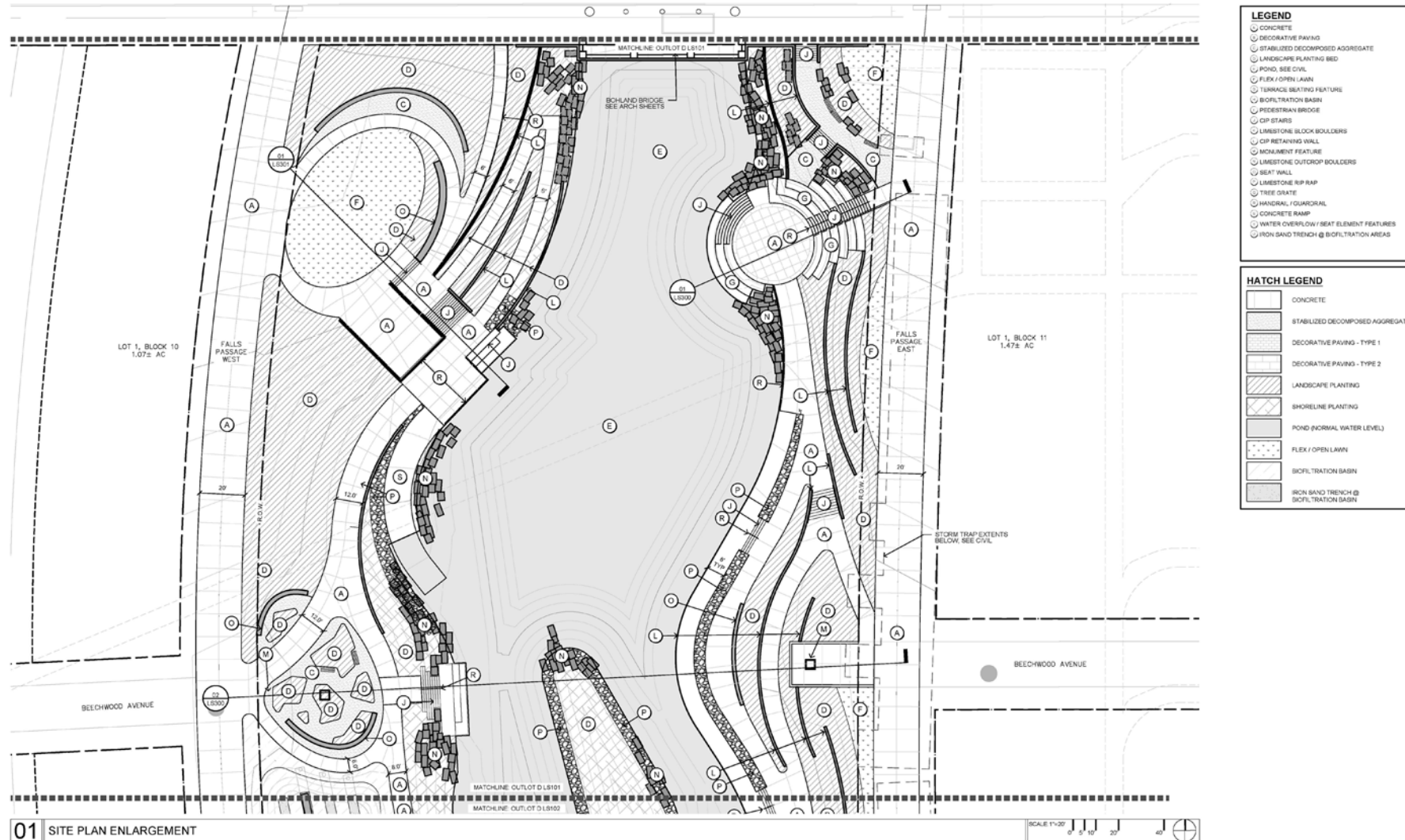
Overview of 60% Set



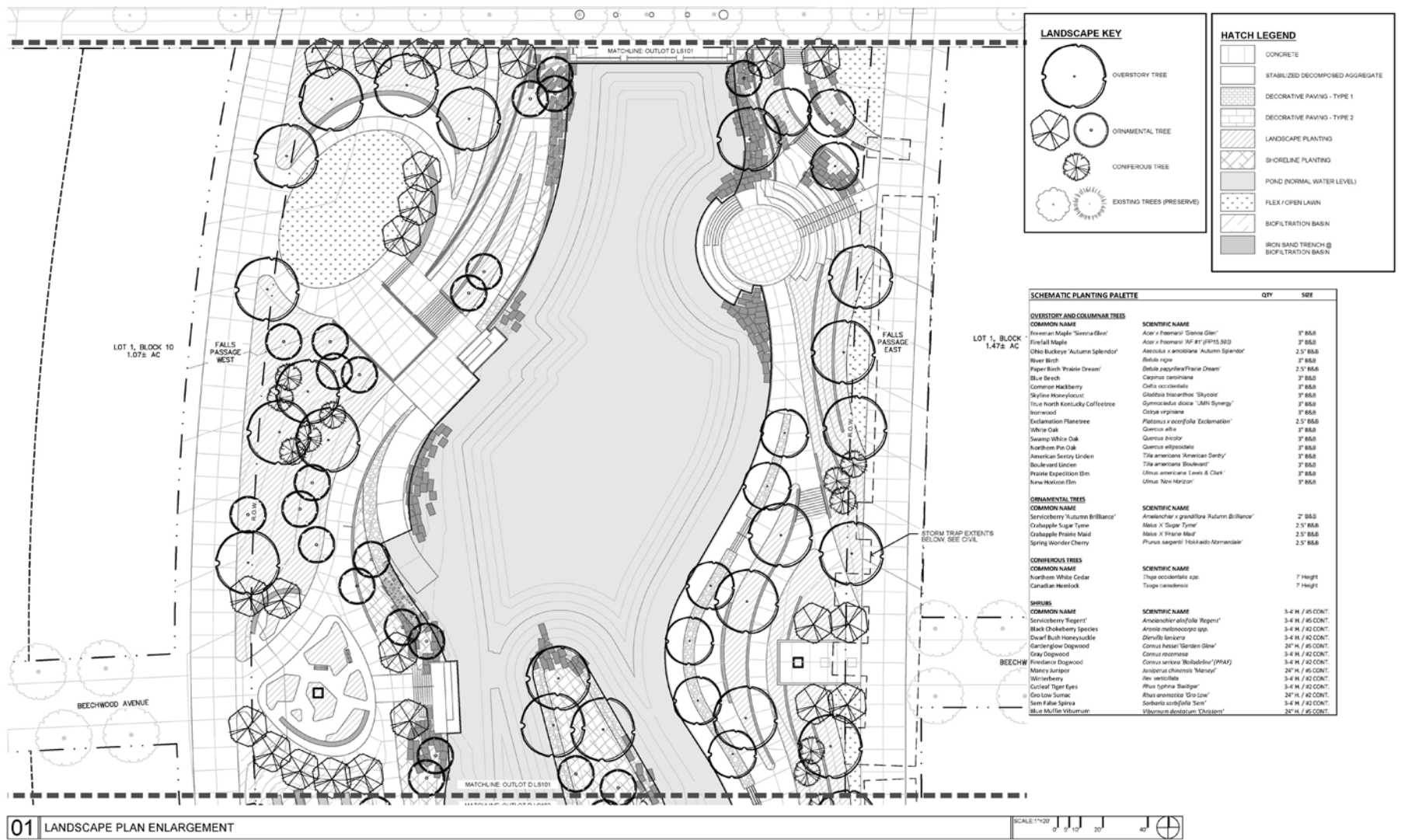
Overview of 60% Set



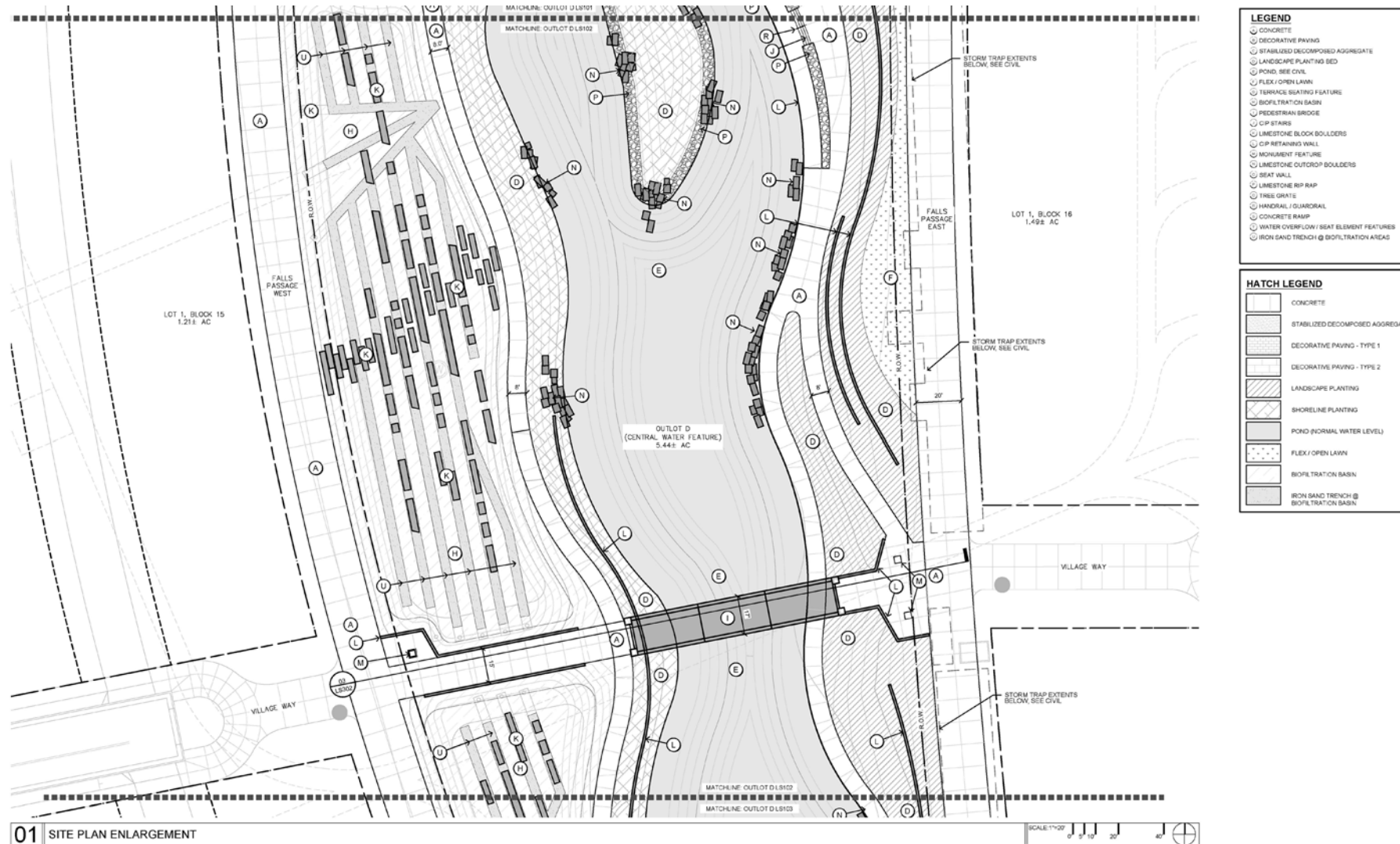
Overview of 60% Set



Overview of 60% Set



Overview of 60% Set

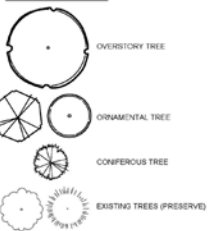


Overview of 60% Set

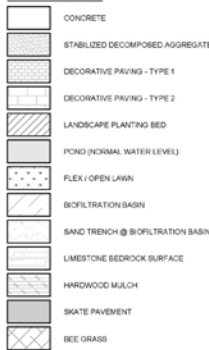
SCHEMATIC PLANTING PALETTE		QTY	SIZE
OVERSTORY TREES			
COMMON NAME	SCIENTIFIC NAME		
Ohio Buckeye 'Autumn Splendor'	<i>Aesculus v. americana 'Autumn Splendor'</i>	2	5' S&S
Paper Birch 'Traverse Dream'	<i>Betula papyrifera 'Traverse Dream'</i>	2	5' S&S
Blue Beech	<i>Carpinus caroliniana</i>	3	5' S&S
Bitternut Hickory	<i>Carya cordiformis</i>	3	5' S&S
Common Hackberry	<i>Celtis occidentalis</i>	3	5' S&S
Prairie Gold Aspen	<i>Populus tremuloides 'NE Ad'</i>	2	5' S&S
White Oak	<i>Quercus alba</i>	3	5' S&S
Swamp White Oak	<i>Quercus bicolor</i>	3	5' S&S
Northern Pin Oak	<i>Quercus ellipsoidalis</i>	3	5' S&S
ORNAMENTAL TREES			
COMMON NAME	SCIENTIFIC NAME		
Serviceberry 'Autumn Brilliance'	<i>Amelanchier v. grandiflora 'Autumn Brilliance'</i>	2	5' S&S
Thornless Cockspur Hawthorn	<i>Ostrya criss-galli var. inermis</i>	2	5' S&S
Crabapple Prairiefire	<i>Malus x 'Praefire'</i>	2	5' S&S
CONIFEROUS TREES			
COMMON NAME	SCIENTIFIC NAME		
Eastern Red Cedar	<i>Juniperus virginiana</i>	7	Height
White Pine	<i>Pinus strobus</i>	7	Height
Northern White Cedar	<i>Thuja occidentalis</i> spp.	7	Height
SHRUBS			
COMMON NAME	SCIENTIFIC NAME		
Serviceberry 'Regent'	<i>Amelanchier alnifolia 'Regent'</i>	3-4	H / 80 CONT.
Black Chokeberry	<i>Aronia melanocarpa</i> spp.	3-4	H / 80 CONT.
Dwarf Bush Honeysuckle	<i>Diervilla lonicera</i>	3-4	H / 80 CONT.
Cardinal Dogwood	<i>Cornus sericea 'Cardinal'</i>	3-4	H / 80 CONT.
Eastern Red Cedar	<i>Juniperus virginiana</i>	3-4	H / 80 CONT.
Manly Juniper	<i>Juniperus chinensis 'Manly'</i>	3-4	H / 80 CONT.
Cultural Tiger Trees	<i>Forsythia xanthocarpa</i>	3-4	H / 80 CONT.
Ginseng Sumac	<i>Rhus glabra 'Ginseng'</i>	3-4	H / 80 CONT.
Semi False Spirea	<i>Sorbaria sorbifolia 'Semi'</i>	3-4	H / 80 CONT.
Cranberry spp.	<i>Viburnum corymbosum</i> spp.	3-4	H / 80 CONT.
Nannyberry	<i>Viburnum lentago</i>	3-4	H / 80 CONT.



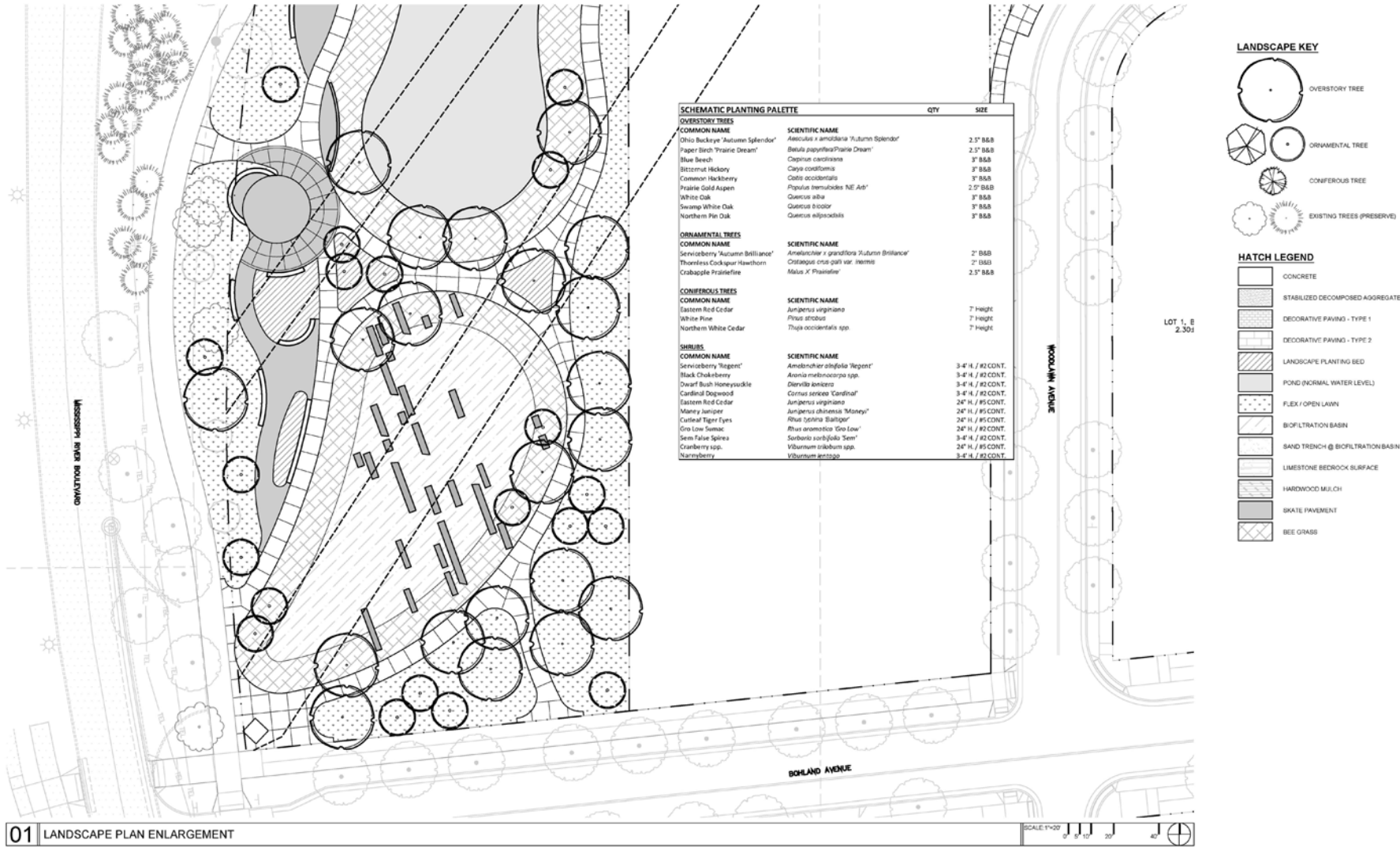
LANDSCAPE KEY



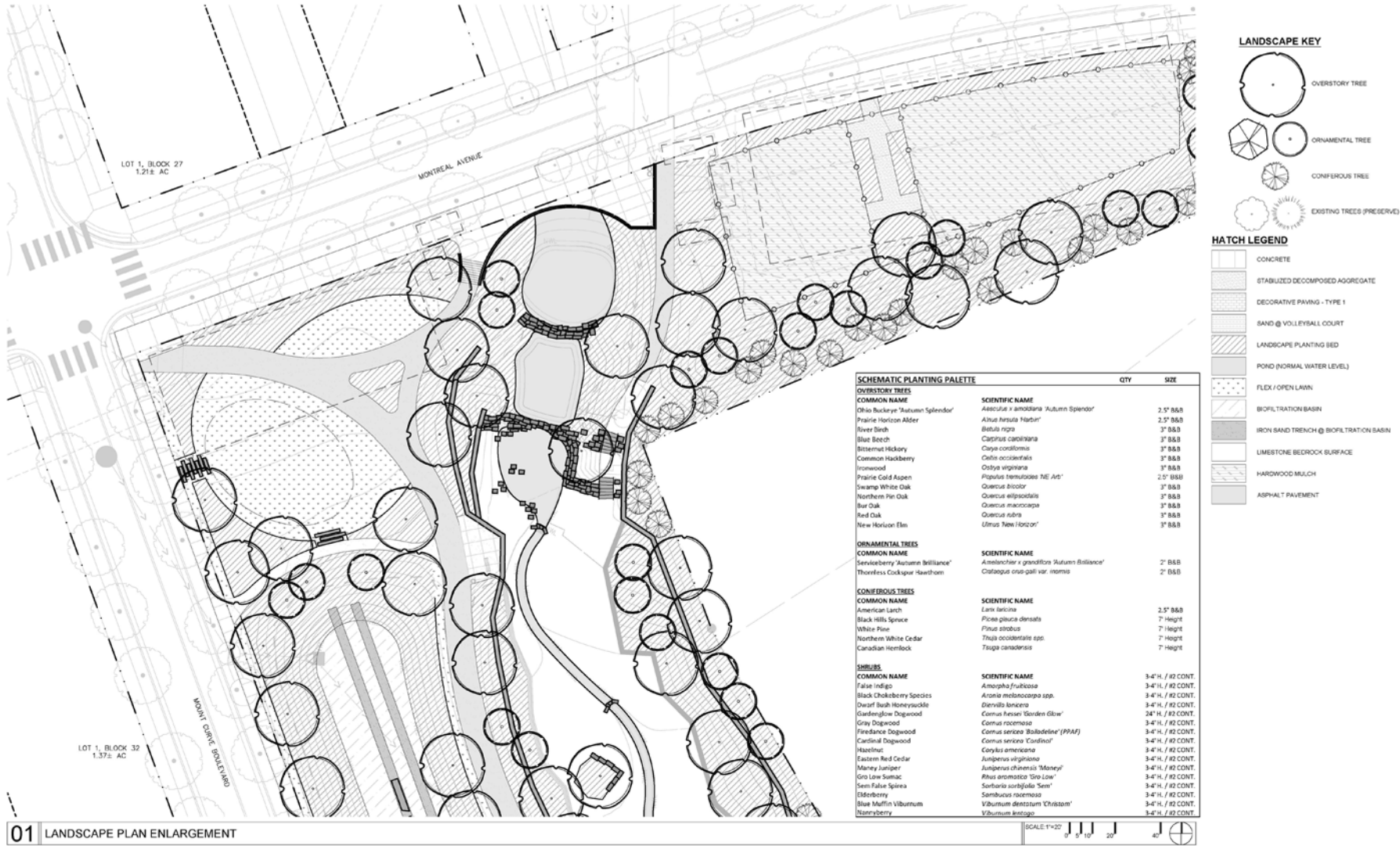
HATCH LEGEND



Overview of 60% Set



Overview of 60% Set



01 LANDSCAPE PLAN ENLARGEMENT





Questions?

Please type any questions you have regarding the information that has been presented so far and we will answer them as we receive them.

Design Update on Park A



Design Update on Park A



FORD SITE



Design Update on Park A



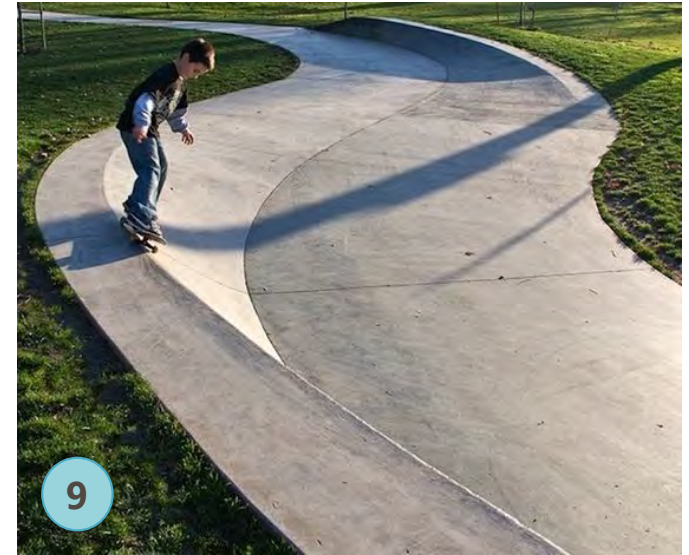
FORD SITE



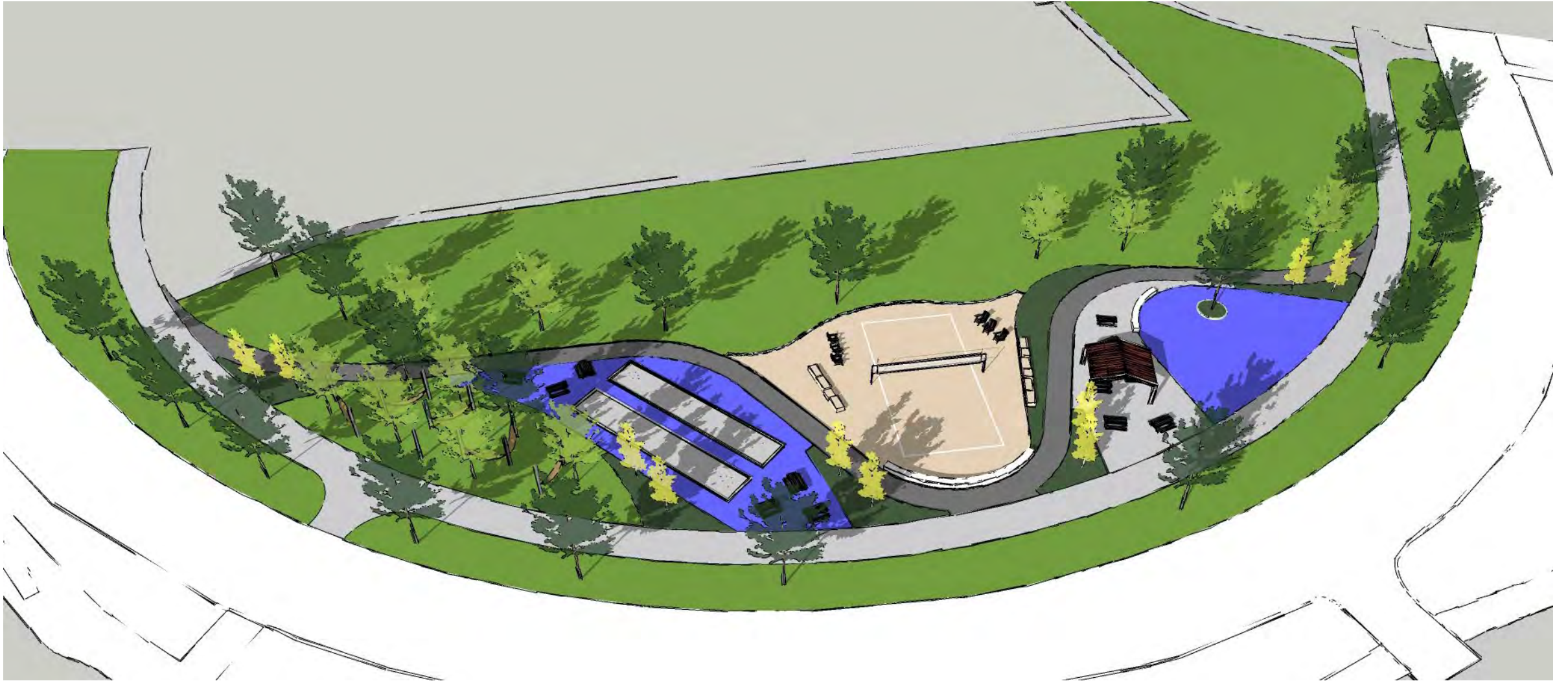
Design Update on Park A – Climbing Options



Design Update on Park A – Skate Components



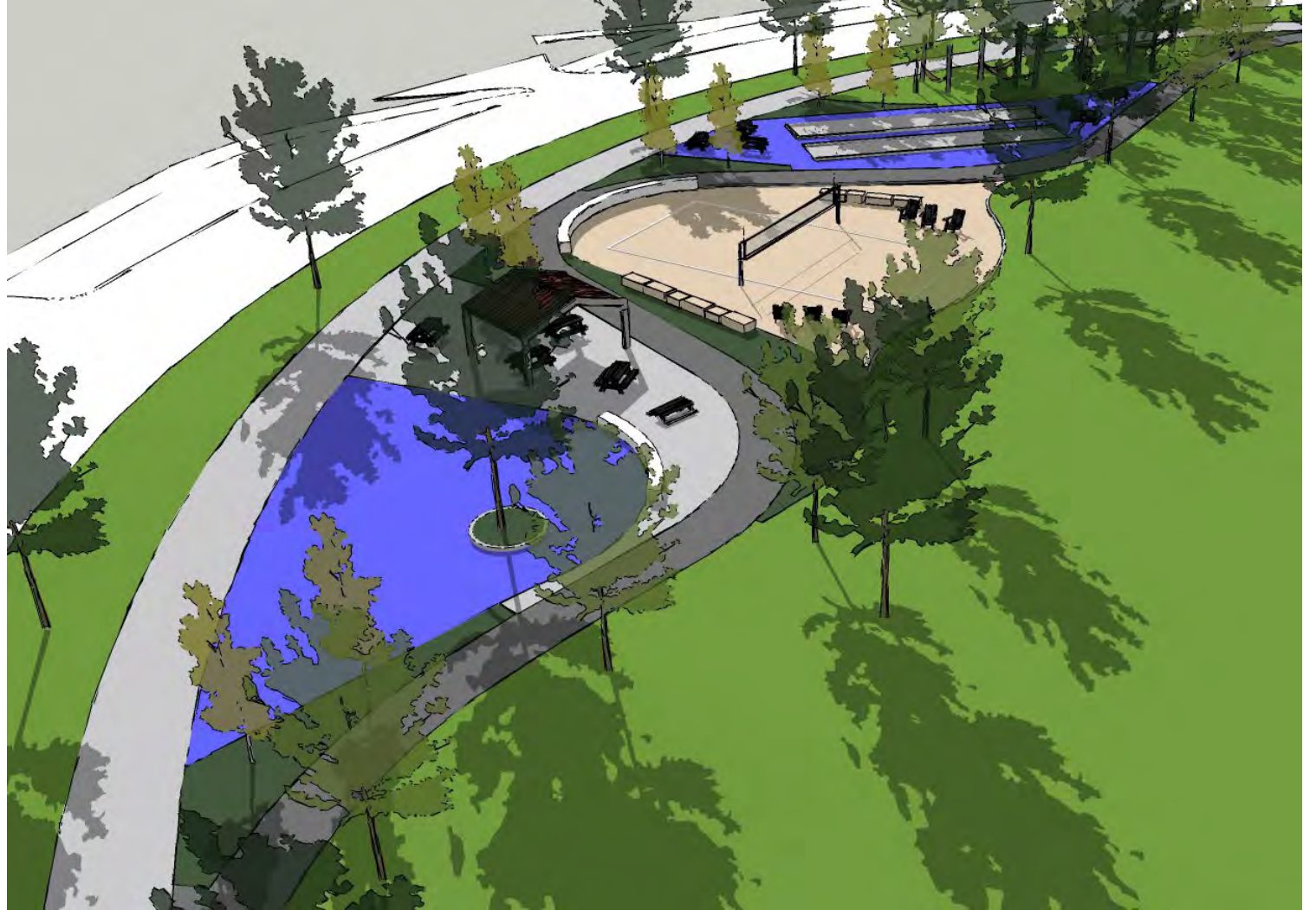
Design Update on Park C



Design Update on Park C



FORD SITE



Design Update on Park C



Design Update on Park C



Design Update on Park C



Design Update on Park C



Design Update on Park C



Design Update on Park C



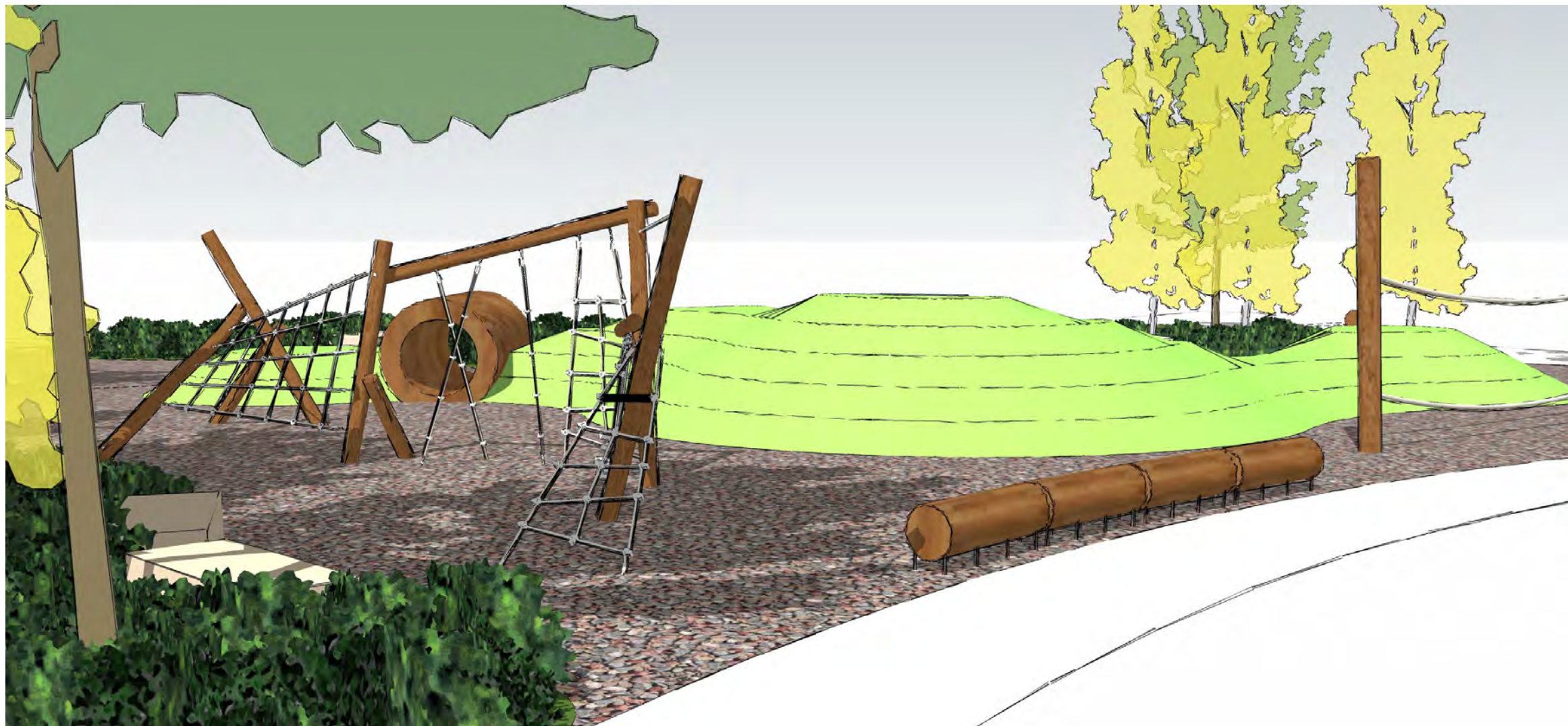
Design Update on Park C



Design Update on Park C



Design Update on Park C



Design Update on Park C – Adult Fitness



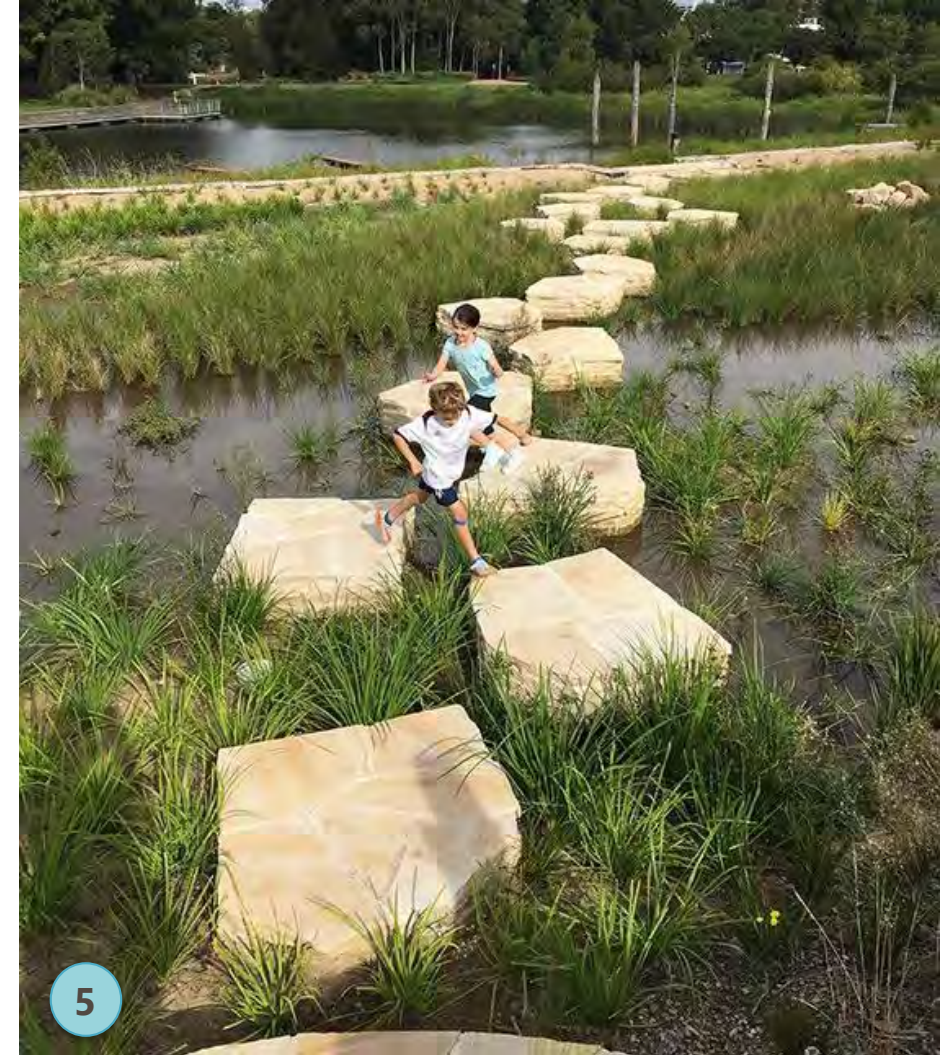
Design Update on Park C – Amenities



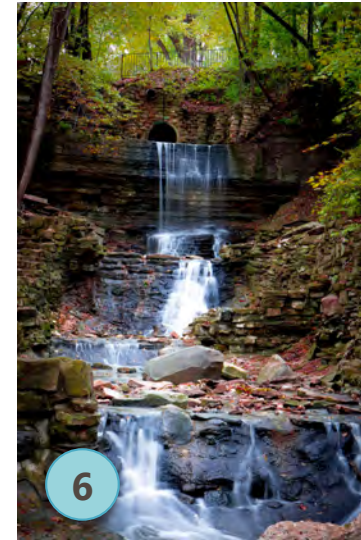
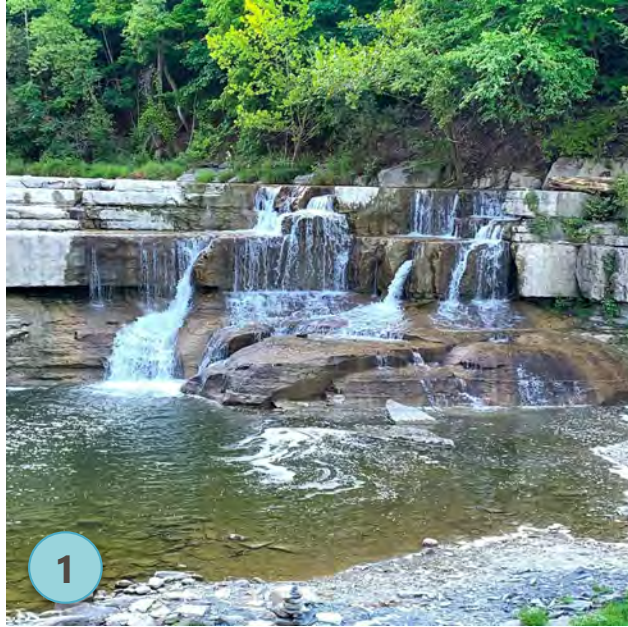
FORD SITE



Design Update on Park C – Amenities



Design Update on Park C – Ravine Character

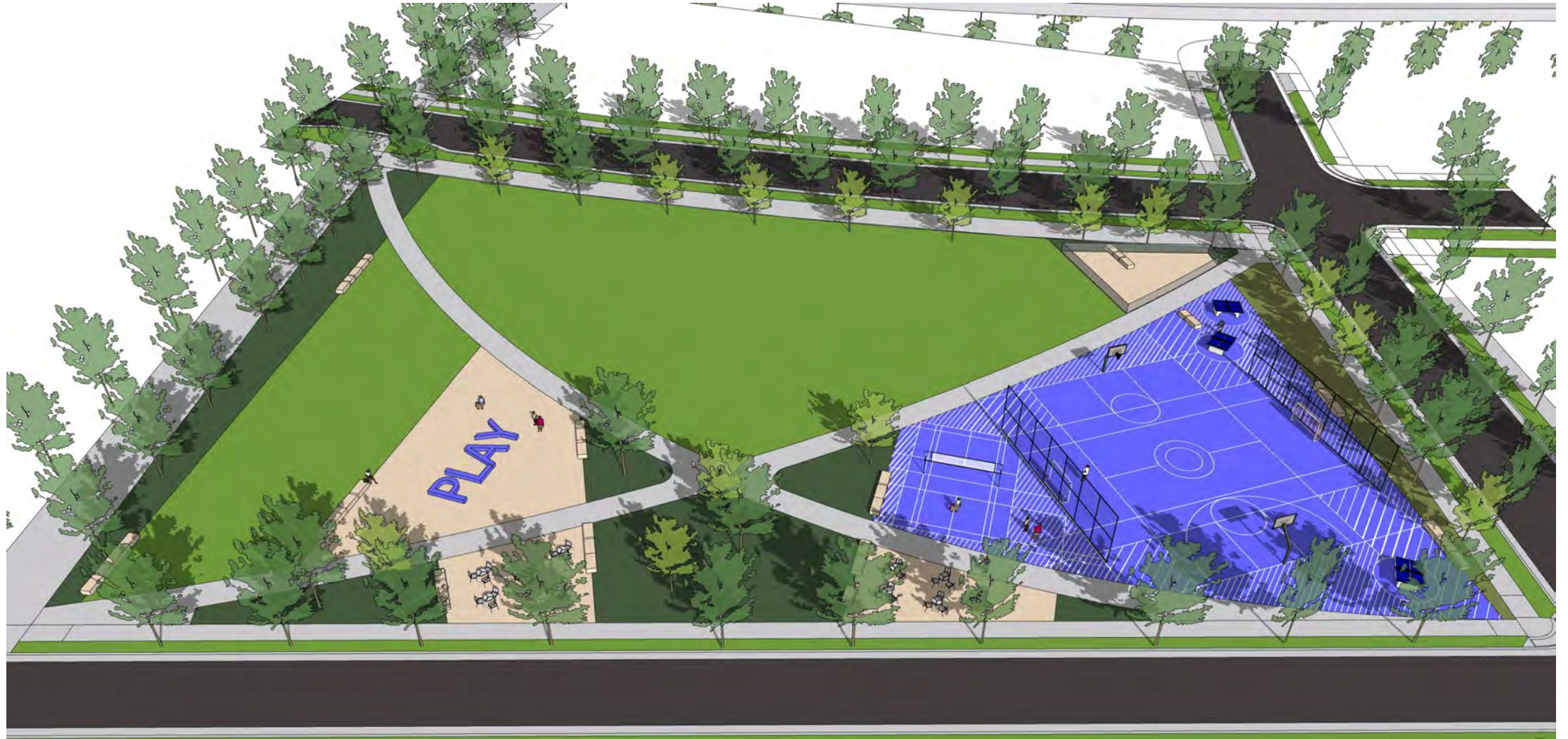




Questions?

Please type any questions you have regarding the information that has been presented so far and we will answer them as we receive them.

Parks B and D Update





HOMEWORK – Conversations



What is a Conversation?

A digital discussion hosted through a phone call or video conferencing solution like Webex, Zoom, Microsoft Teams or Facebook. Groups will meet for 20-30 minute conversation to share thoughts, connect together, and discuss the parks development and its desired amenities and programming. This is a perfect opportunity to connect and grow with others on the PAC and have the ability to collaborate and discuss the project in an open and creative environment



HOMEWORK – Conversations



Conversation Group Guide

You will be randomly placed in a group of three PAC members to share your conversation with. Your first task will be to:

- **Choose how you will connect**
Decide as a group if you'd prefer to share a phone conversation together or if you'd rather share a face to face conversation using a video conferencing format of your choice.
- **Set the Date**
Set a date and a time for when you want to have your conversation and make sure you are all available.

HOMEWORK – Conversations



Conversation Questions

You will have a series of questions to ask each other to stimulate conversation. Please take turns asking and answering the questions.

Questions

Ice Breaker Question:

What is your favorite activity that you like to do in City Parks?

1. What activities and amenities did you select as your top priorities? Discuss why.
2. What do you see as the most critical feature in the 60% plans that will make the parks successful?
3. Community and connection are intended to be a part of the design. How do we best accomplish this goal in the parks?
4. What features or amenities that that are shown in the 60% parks plans resonate most with you?
5. What features or amenities do you feel are missing from the 60% plans?



HOMEWORK – Conversations



Conversation Review

Once your conversation is complete, please summarize your thoughts and discussion in a brief or in-depth written review of the questions and discussion that happened. It is the desire of the project team to have each PAC member individually write and submit your summary to capture the conversation.

These summary's will be used to help further define design direction and prioritization of the Parks amenities and activities.

IDEAS FOR KIDS

We know that some Conversation Groups will be happening with children in the home, spend some time and see what your children think would make a great park. Have them draw themselves at the park or design their own park.

HOMework – Conversations



Conversation Groups

Group A:

- Bobak Rozavi
- Eric Weiss
- Frank Jossi
- Karen Welle

Group B:

- Patty Partridge
- Brooklynn Hill
- John Mountain

Group C:

- Andy Trcka
- Michelle Doyle
- Colleen Zuro White

Group D:

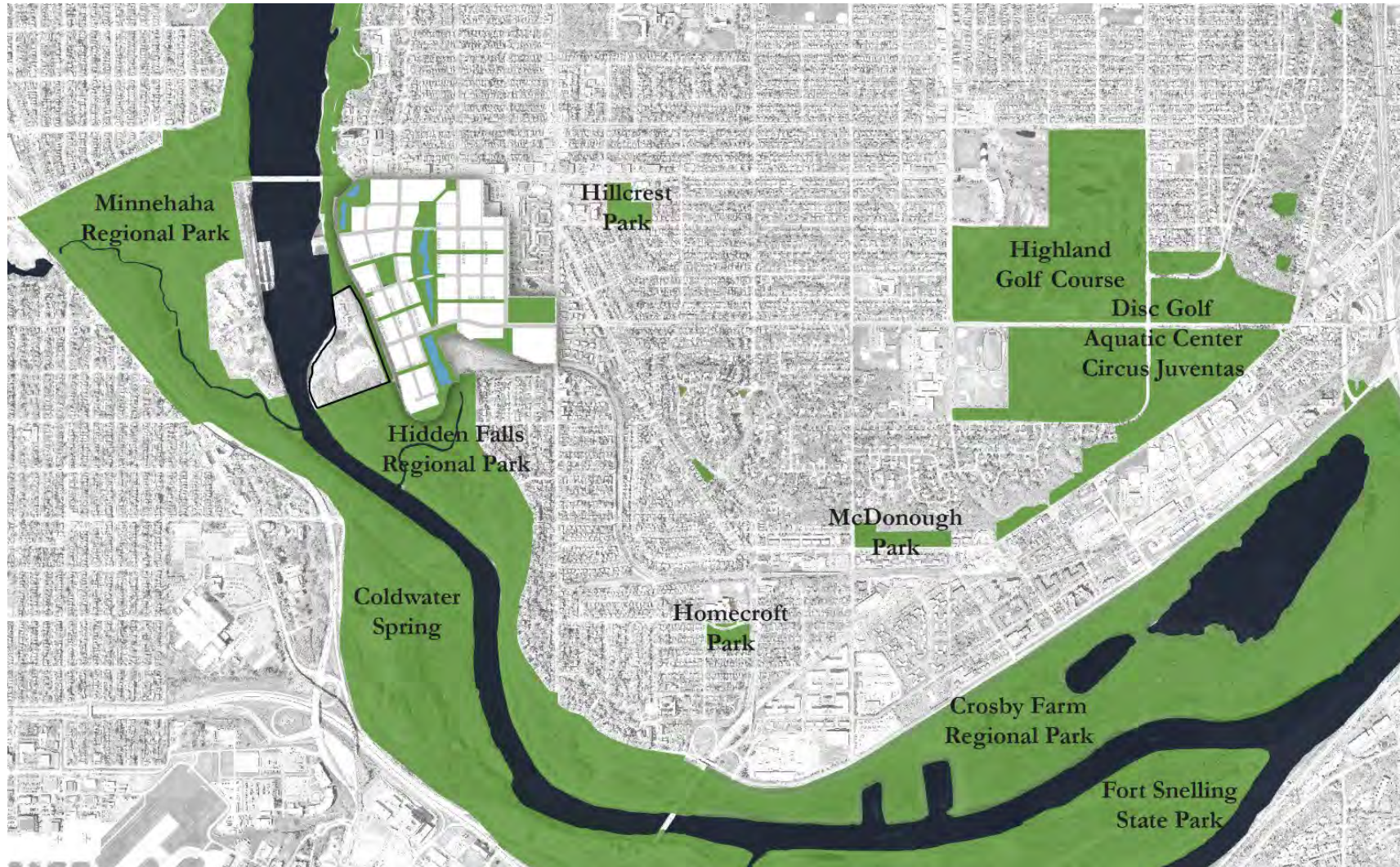
- Paul Pappas
- Emily Reimer
- Malika Billingslea

Next Steps

- Conversation Groups
- Set up your Group meeting time and day.
- Conversation Summary's are due back by June 15th
- 90% Set is due by end of June (60% design of Park B and D)
- Next meeting mid-July 2020

Questions?

Area Parks, Trails and Open Space



THE FORD SITE PARK SYSTEM

2021 Complete Parks Facilities or Public Open Spaces

2022 Complete Parks Facilities or Public Open Spaces

2023 Complete Parks Facilities or Public Open Spaces

